

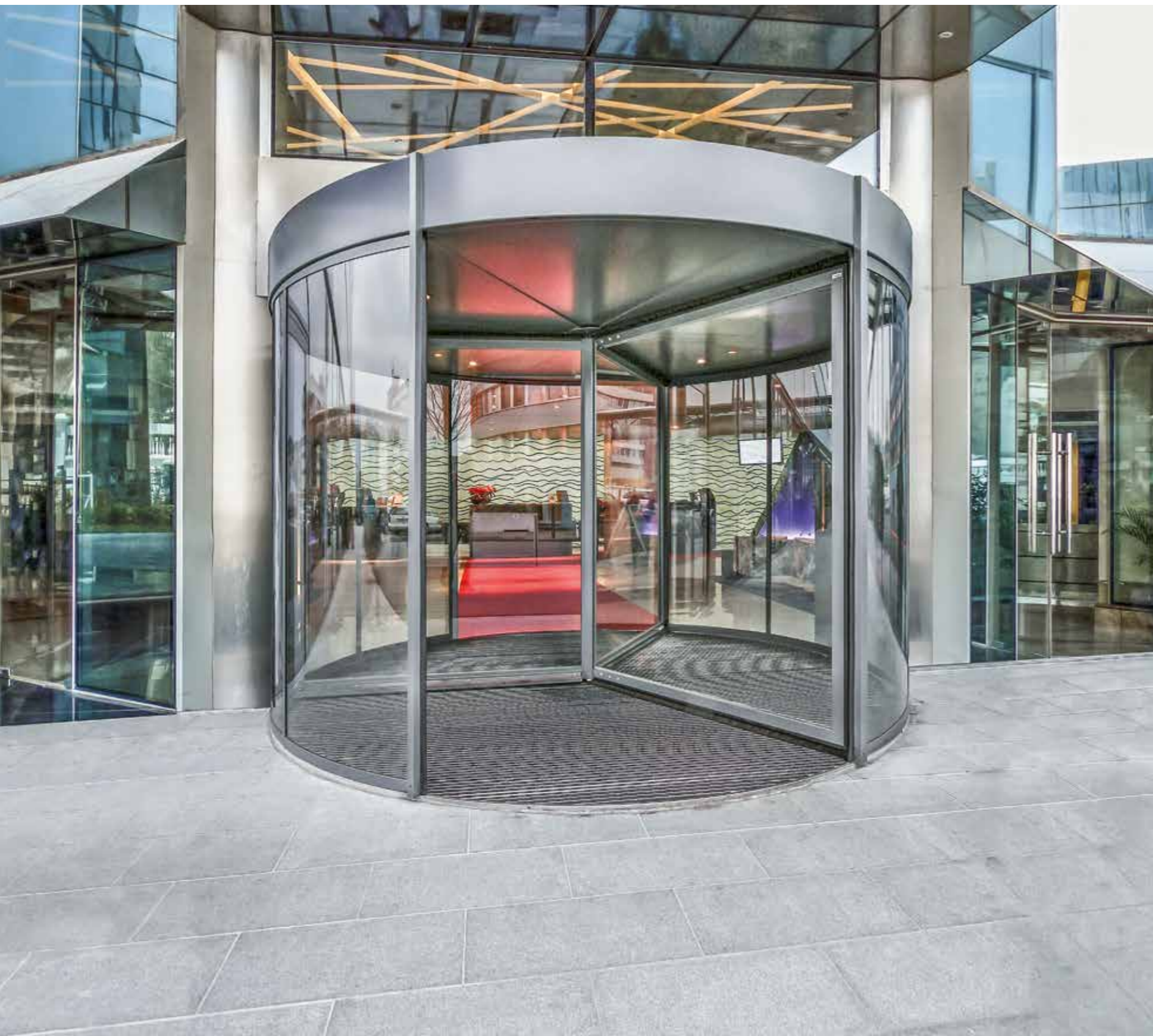
TORMAX T5 classic

Elegant full-frame canopy revolving door systems



★★★★★
TORMAX

TORMAX T5 classic 3-wing / 4-wing Full-frame canopy and unique slim design in one



The TORMAX T5 classic range with 3 or 4 wings sets a new benchmark in the market for revolving door systems with overhead drives: it features the most slender centre column in the market, extra slim profiles, a reduced canopy height and a brand new high performing drive unit. The ideal solution for customers seeking elegance, performance and resilience.

This automatic door system offers numerous options, such as night closure or breakout door wings. Diameters for the slender version range from 1.6 to 4.0 m, larger dimensions up to 7.4 m are available with heavier profiles.

Uncompromising elegance, performance and robustness



A high-powered, wear-free and highly efficient AC synchronous motor.

The TORMAX T5 classic 3-wing/4-wing revolving door systems stand for state-of-the-art technology and versatile functionality in revolving doors. They can be fully customized to fit your requirements and excel with their outstanding properties.

Elegant design

TORMAX T5 classic 3-wing/4-wing feature the most transparent design in the market for full-frame canopy revolving door systems. The revolving door comes with an individual choice of canopy covering, ceiling, drum walls and floor matting. Drive and control units as well as the mechanical components are all fully integrated in the canopy.

Robust construction

With its welded canopy construction, the unit bears a load of 150 kg for service and cleaning staff – a benefit that the usual canopy constructions in the market with on-site screw assembly will never achieve.

Space-saving dimensions

The unique slim installation width which only adds 35 mm on each side to the inner diameter grants a maximum of usable space and a higher capacity of your entrance.

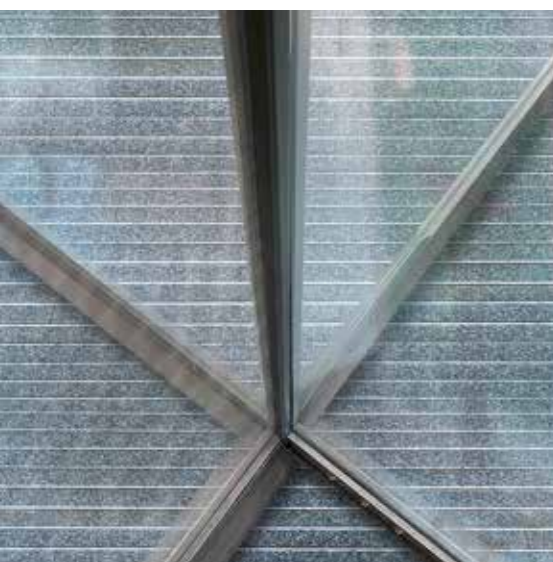
High performance drive

TORMAX drive systems have been the global benchmark for innovative door automation since 1951. The brushless electric motors are engineered and manufactured in-house specifically to the requirements of the TORMAX T5 classic revolving door systems. Due to their high torque, the drives are exceptionally reliable, running smoothly and quietly. They ensure outstanding dynamic door operation as well as high safety with exceptional braking performance and fast signal processing. The flat drive housing of only 110 mm enables slim design applications and makes the drive a unique powerhouse.

3- or 4-wings to perfectly fit your needs

Choose between 3- and 4-wing revolving door options depending on the specific situation and footfall. The 3-wing option is perfectly suited for hotels, schools or corporate headquarters. It offers convenient passage even with bulky items due to the relatively large compartments even with limited door size. The 4-wing option offers the largest possible passage width and therefore it is the right choice for entrances with high capacity demands in public buildings, congress centres or bank and post offices.

Extra slim profiles and the most slender centre column in the market.



3-wing
Passage width



- › 60° opening: Drum walls stand out more distinctly from façade
- › Relatively large compartments

4-wing

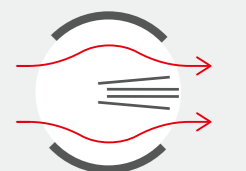


- › 90° opening: Largest possible passage width
- › Up to 30% higher capacity

Breakout opening



Escape route position



A wide range of options

Discover the large variety of options that are available with the TORMAX T5 classic 3-wing/4-wing revolving doors. Our competent technical advisors are happy to give you more detailed information and support you with the configuration.



Night closure

The night closure is a curved sliding door that closes the entrance of the revolving door either manually or automatically, preventing both unauthorised access and the ingress of leaves, water and snow. It is available with manual or automatic operation and also as retrofit solution.



Air curtain

The air curtain TORMAX AirTech increases energy efficiency by separating cold and hot air. It is installed either directly into the canopy, the ceiling or as a stand-alone solution. For maximum performance and efficiency, a customized curved blow-out channel with flush integration into the canopy is available. Due to this construction, the complete opening width is covered by the air curtain.



Access control

Various access control and mantrap access systems are available to fit the revolving door system to your specific security requirements. Find out more by talking to our technical advisors.



Breakout

Door wings that can be folded out manually in any position (breakout), suitable for escape and rescue routes or passage with bulky goods. Note that escape routes are subject to local regulations.



Auto-folding

Available with 3-wing doors only, one of the door wings folds automatically by the push of a button to provide a clear passage or to serve as disabled access, smoke discharge or rescue access.



Building management system

TORMAX T5 revolving doors are easy to integrate into any building management system. They allow facility operators to control the doors and gain an immediate overview of the door status.

Technical specifications

System parameters

3- or 4-wing solutions
Internal diameter: 1600–4000 mm
Profile widths top and bottom: 55 mm (with only 45 mm of top profile visible)
Centre column profile width: 59.5 mm (3-wing), 54 mm (4-wing)
Passage height: 2200–4500 mm
Canopy height: min. 110 mm

Standard equipment

Built-in safety package: Horizontal and vertical safety bumpers on all door wings (>3000 mm diameter), laser sensors that cover the full width of the door wings
Aesthetic and well equipped ceiling: 8 ceiling segments and 8 symmetrically and flush integrated LED spots for uniform lighting

Drive system

High-powered, wear-free and highly efficient synchronous motor
Exceptionally smooth, quiet and reliable operation due to high torque drive
Certified with 2 million test cycles at 4000 cycles per day
High safety ensured by fast signal processing and outstanding brake performance
Flat drive housing (110 mm)

Drive operation

Manual: Complete manual door operation suitable for small entrances, available with electronic speed limiter
Push & Go: The door wings start into drive-supported motion by a gentle push; they are controlled with an electronic speed limiter and auto-positioned correctly when not in use
Automatic: Fully automatic, secure and contactless operation for maximum convenience and hygiene

Options

Night closure: curved sliding door closes the entrance of the revolving door either manually or automatically, also available as retrofit
Certified burglar protection up to resistance class 3
Ceiling segments in aluminium and with insulation to reduce noise
Insulated canopy for improved energy balance
Breakout: door wings can be folded out manually or automatically (auto-folding) from any position for escape and rescue routes or for the passage of bulky items
Air curtain TORMAX AirTech curved in line with canopy for optimal energy efficiency

Approvals

CE / EN 16005, TÜV certified



the passion to drive doors

TORMAX installed Europe's first automatic door in 1951. Today, we are a leading manufacturer of automatic pedestrian and industrial door systems, distinguished by technologically advanced, reliable and innovative solutions.

As an independent Swiss industrial group with global operations, we offer the full range of automatic pedestrian and industrial door systems and ensure their reliable operation throughout their service life.

TORMAX will be pleased to advise you about suitable door systems and support you from design to manufacturing, supervising construction, installation and service.

Get in touch with TORMAX!

www.tormax.com