



Product Service

CERTIFICATE

No. Z2B 14 02 15347 045

Holder of Certificate: **TORMAX**
Landert Motoren AG

Unterweg 14
8180 Bülach
SWITZERLAND



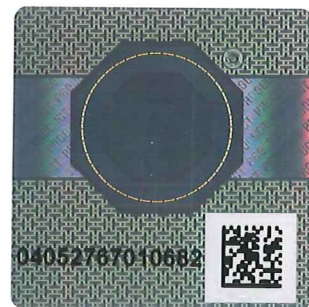
Certification Mark:



Product: **Automatic door drives**

The product was tested on a voluntary basis and complies with the essential requirements. The certification mark shown above can be affixed on the product. It is not permitted to alter the certification mark in any way. In addition the certification holder must not transfer the certificate to third parties. See also notes overleaf.

Test report no.: 713031884



Date, 2014-02-26

Werner Müller-Stärke
(Werner Müller-Stärke)

Page 1 of 2





Product Service

CERTIFICATE

No. Z2B 14 02 15347 045

Model(s): Win Drive 2201 Sliding Door Drive

Parameters:

Rated voltage: 230/115VAC
 Rated current: 0,8/1,9A
 Rated frequency: 50-60Hz
 Rated power max.: 200W
 Protection degree: I
 Protection type: IP22
 Maximum door leaf mass:
 Linear 1 leaf: 1 x 120kg
 Linear 2 leaves: 2 x 100kg
 Telescope 2 leaves: 2 x 80kg
 Telescope 4 leaves: 4 x 80kg
 Curved 1 leaf: 1 x 120kg
 Curved 2 leaves: 2 x 100kg

The model can be equiped with a brake unit.

Performance level "c"

Classification	
Figure	Number
1	2
2	3
3	2
4	0
5	1
	2
	3
6	0
7	
8	4

Tested according to:

EN 16005:2012
 DIN 18650-1:2010
 EN 60335-2-103/A11:2009
 EN 60335-1:2012
 EN ISO 13849-1:2008

Production Facility(ies):

86442

