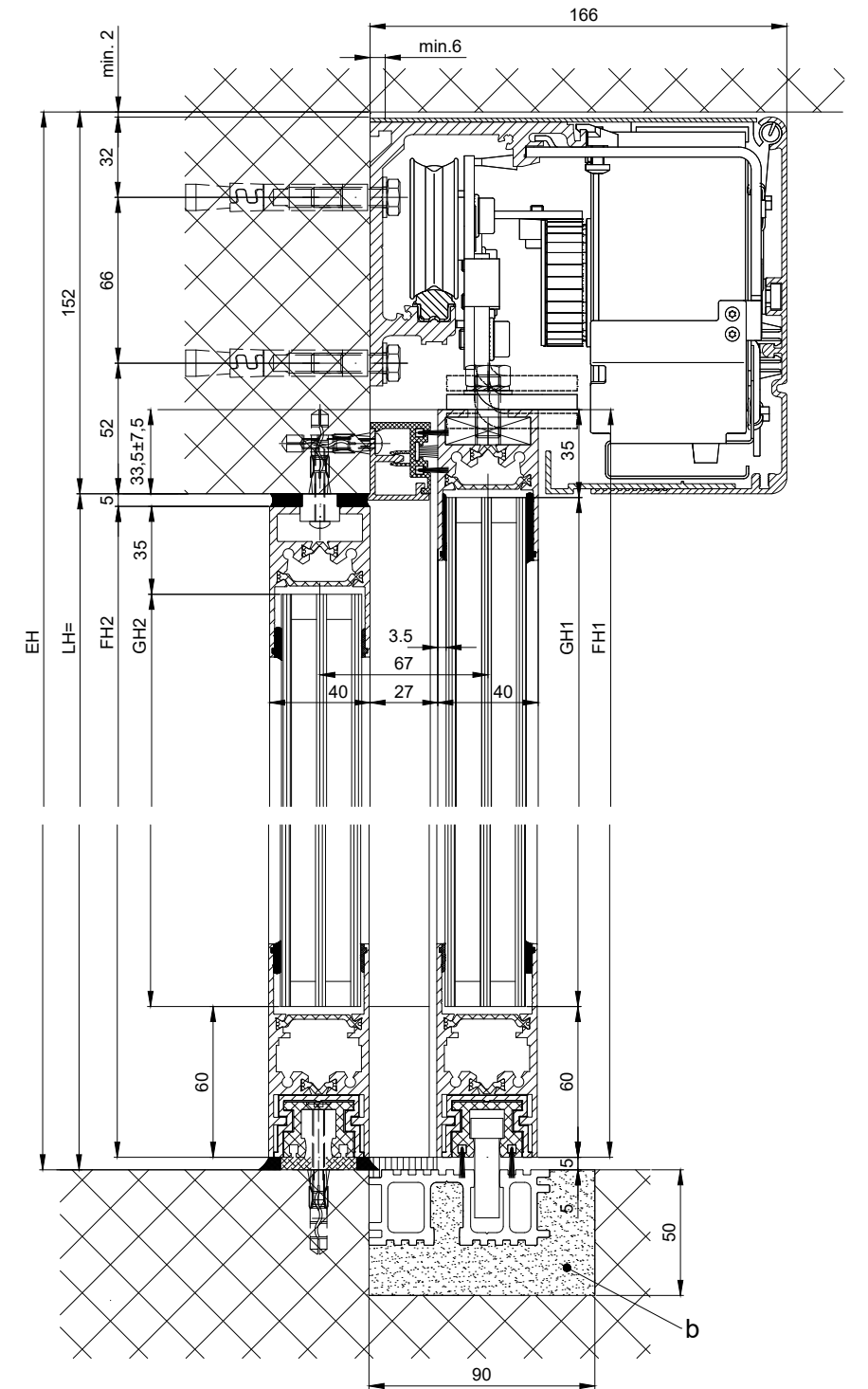
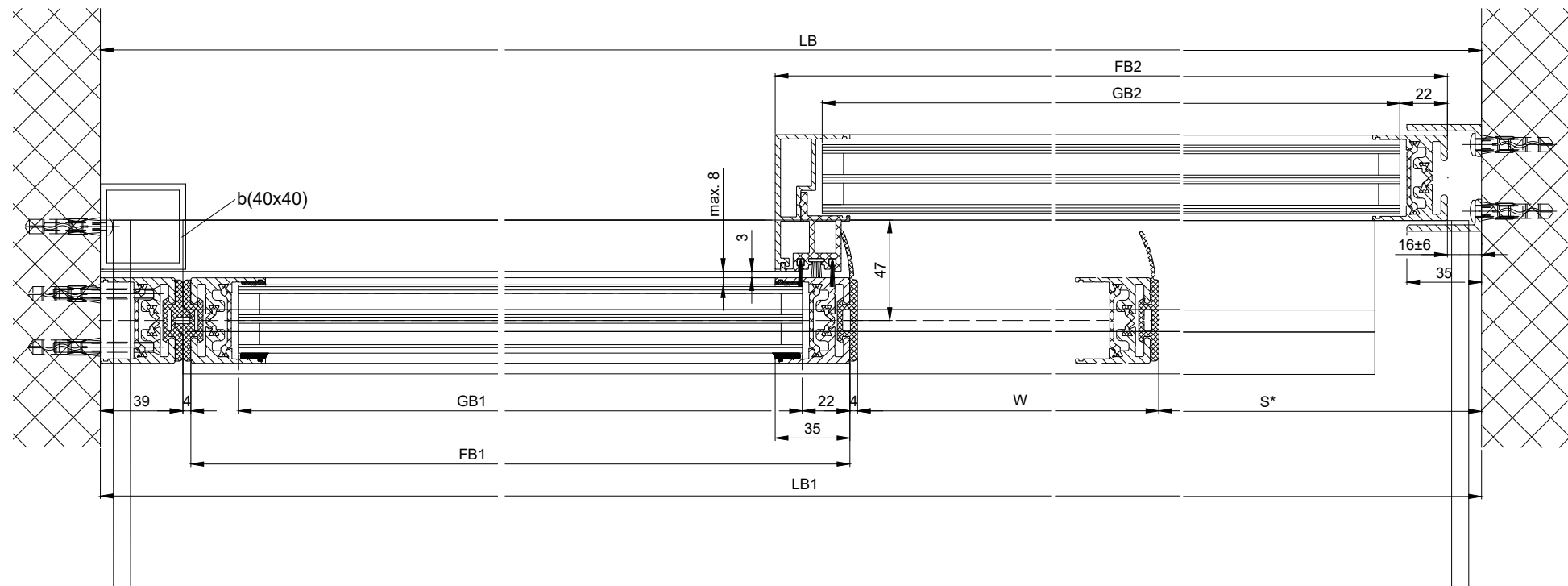
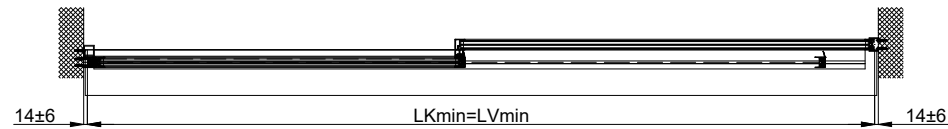
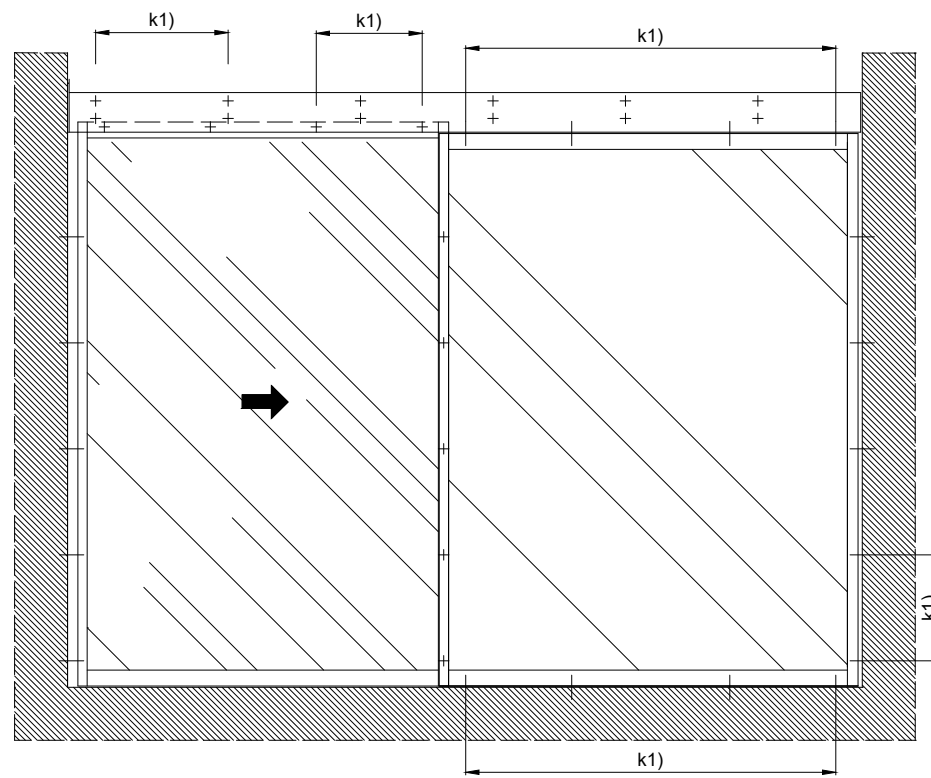


1:20



b) By others

k1) Select the distance/type and number of fasteners according to the building structure and required load-bearing capacity.

For variants see supplementary sheets

The door leaves must be made from material which do not bear any potential risk of injury in any case of breakage (for example single sheet toughened safety glass, compound safety glass etc.). Transparent door leaves must be clearly labelled to be recognised as such.

* Safety margin according to national regulation

** Light barriers according to national regulation

Anodize/color: layer thickness: Additional info:
RAL: :

Object:

Customer:

Order-Nr.: Date: Releasesignatur:

LB1=2W+S+78
W=(LB1-S-78)/2
LVmin=LB1-28
LKmin=LVmin
FB1=W+31
FB2=W+s+23
GB1=FB1-44
GB2=FB2-44
FH1=LH+28.5
FH2=LH-10
GH1=FH1-95
GH2=FH2-95

Operator typ: Profilsystem Execution	Scale %	Drawn 15.01.18	REFL
iMotoOn 2302 ER-LR32THERM with fixed panel		ok to print	.

TORMAX AUTOMATIC
TORMAX is a division and a registered trademark of Landert Motoren AG, CH-8180 Bülach-Zürich

Document number: **T3_390_712** Index **A**