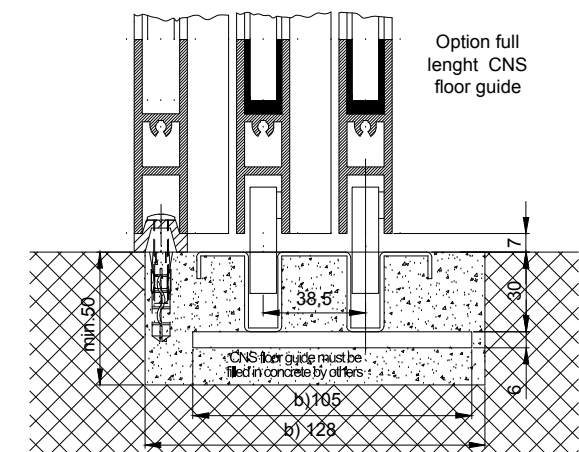
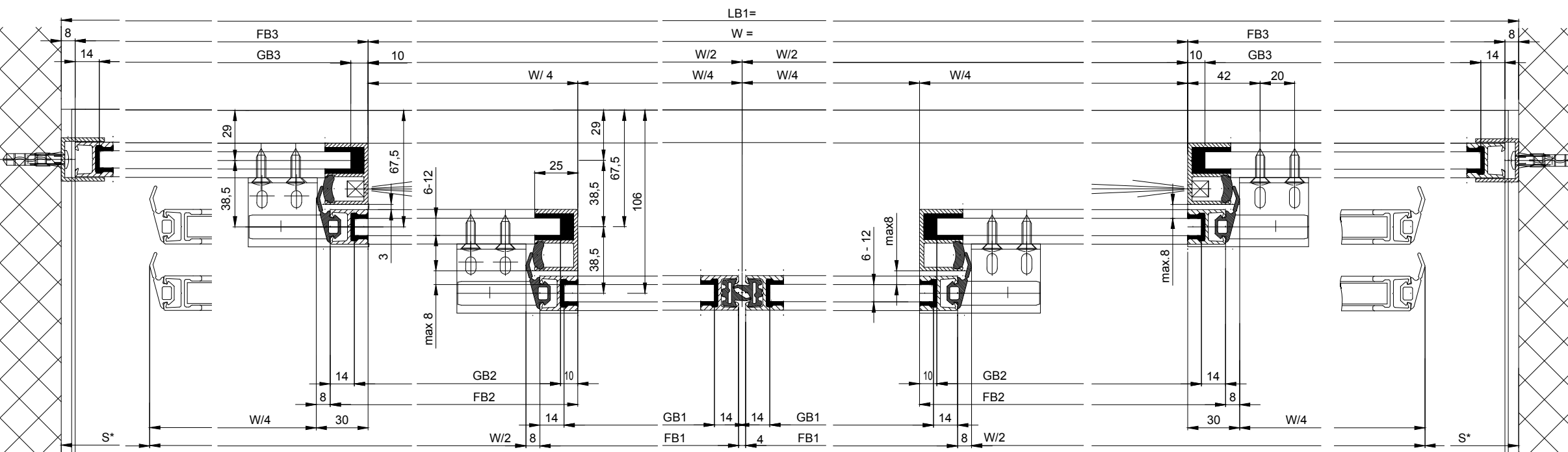
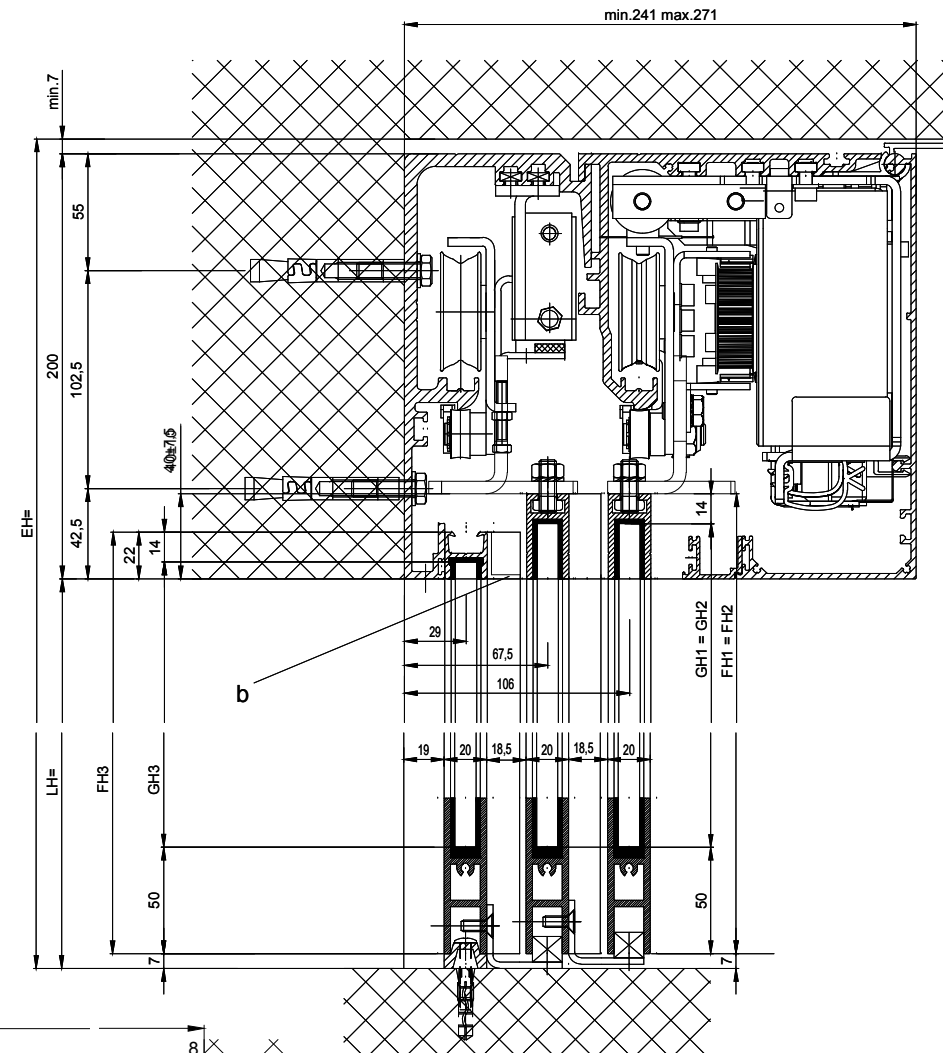
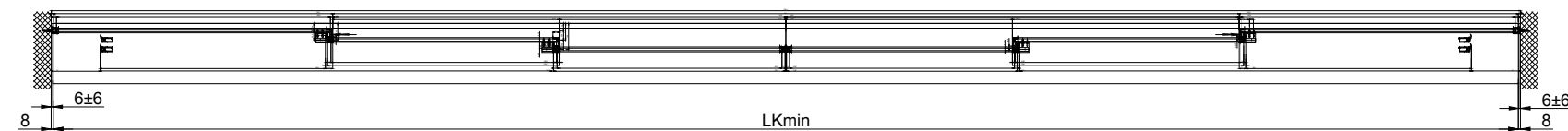
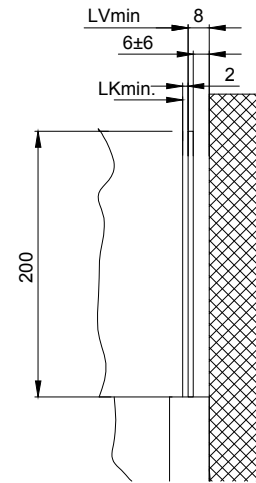
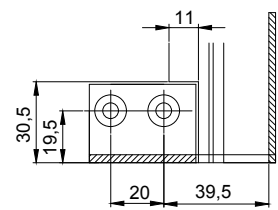


Detail Y

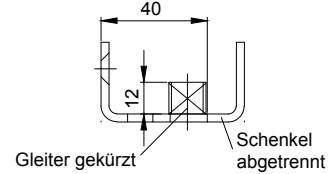


b) Supplied by employer  
 The door leaves must be made from material which do not bear any potential risk of injury in any case of breakage (for example single sheet toughened safety glass, compound safety glass etc.). Transparent door leaves must be clearly labelled to be recognised as such.

Detail X



Nacharbeit:  
 Seitliche Bodenführung



$LB1 = 1.5 \cdot W + 2S + 60$	$FH1 = FH2 = LH + 33$
$W = (LB1 - 2S - 60) / 1.5$	$FH3 = LH + 15$
$LKmin = LB1 - 20$	$GH1 = GH2 = FH1 - 64$
$LVmin = LKmin + 2$	$GH3 = FH3 - 64$
$FB1 = (W/4) + 20$	$GB1 = FB1 - 28$
$FB2 = (W/4) + 22$	$GB2 = FB2 - 24$
$FB3 = (W/4) + S + 22$	$GB3 = FB3 - 24$

\* Safety margin according to national regulation  
 \*\* Light barriers according to national regulation

Anodize/color: \_\_\_\_\_ layer thickness: \_\_\_\_\_ Additional info: \_\_\_\_\_  
 RAL: \_\_\_\_\_

Object: \_\_\_\_\_  
 Customer: \_\_\_\_\_

Order-Nr.: \_\_\_\_\_ Date: \_\_\_\_\_ Releasesignatur: \_\_\_\_\_

Operator: Profilsystem Execution  
 iMotion 2301-TB LR12 with fixedwing, lintel

Scale: \_\_\_\_\_ Drawn: 08.07.19 MURD  
 % ok to print

TORMAX AUTOMATIC TORMAX a Division of Landert Group AG CH-8180 Bülach-Zürich Document number: T3\_390\_609 Index B