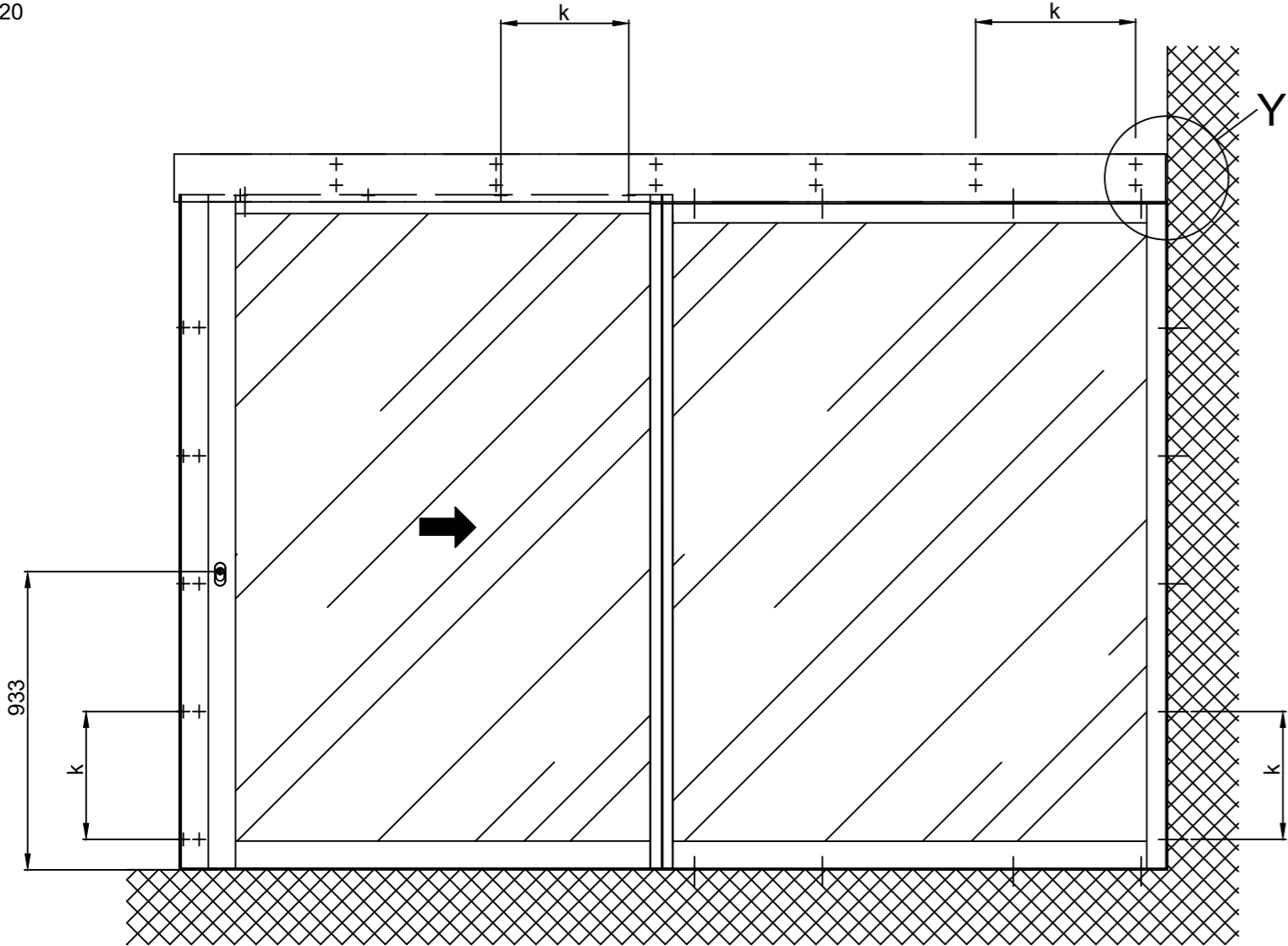
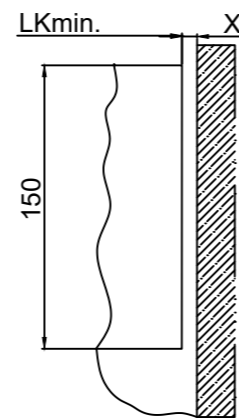


1:20

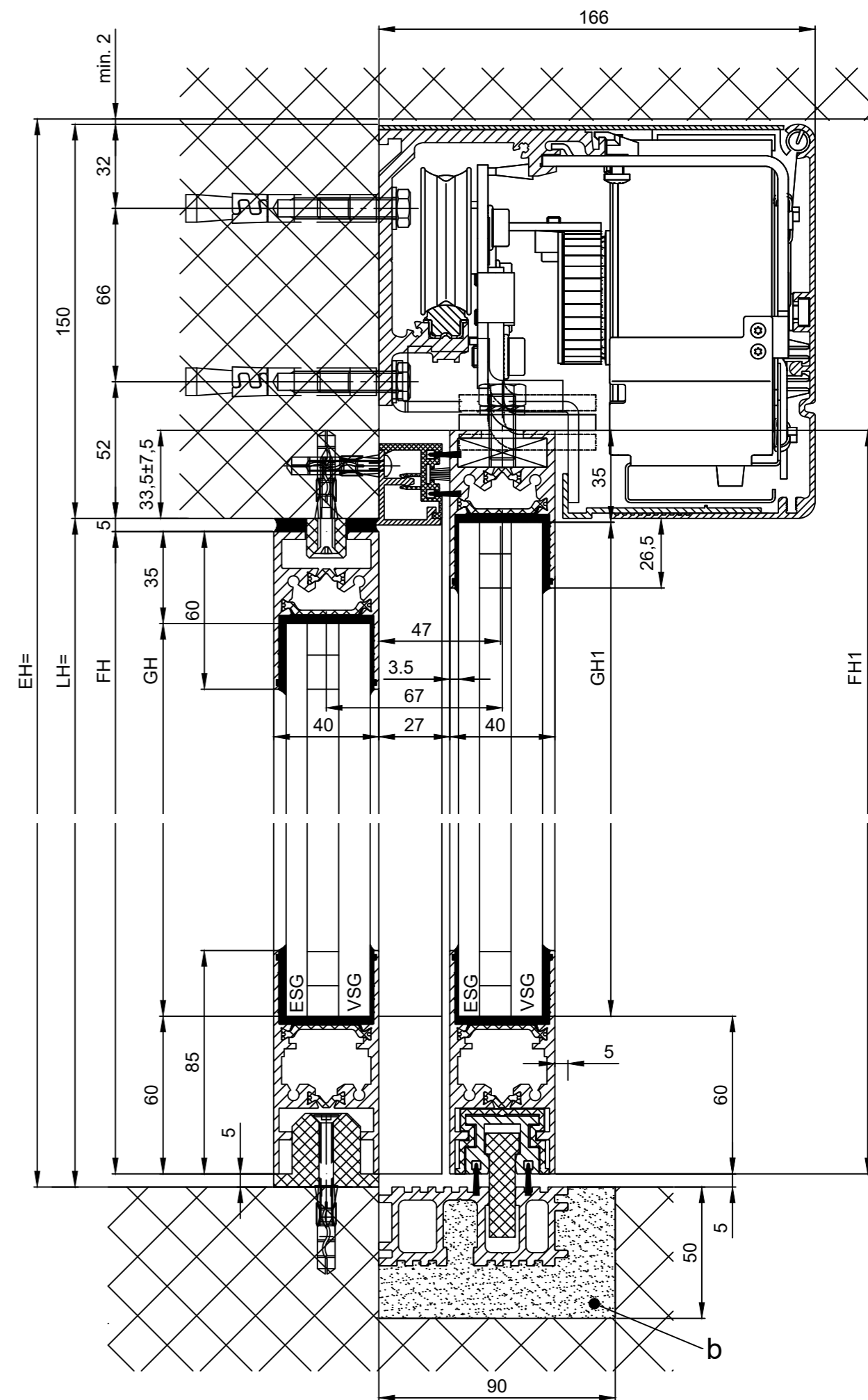
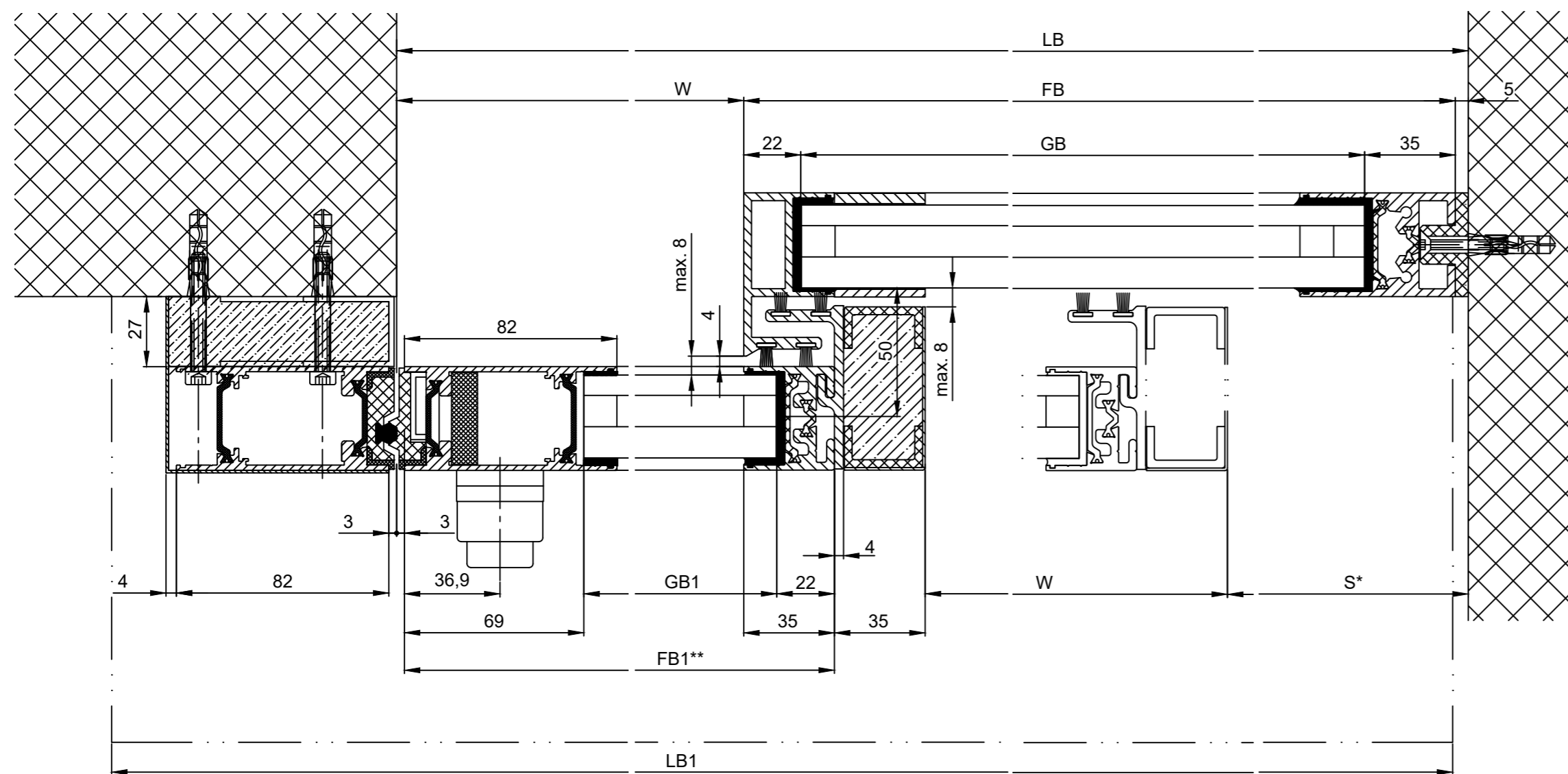
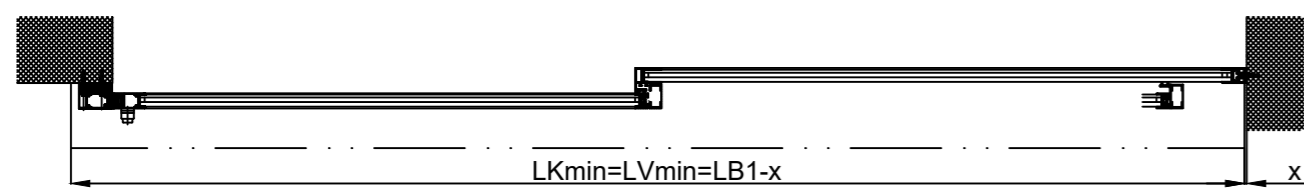


Detail Y

Wall clearance without side plate $x = \min. 8$



Note: Wall clearance with side plate $x = \min. 80$



b) Carried out by others
 k) Distance / type and number of screw connections are selected according to the building structure and required strength.

* Safety margin according to national regulation			
Anodize/color:	layer thickness:	Additional info:	
	RAL		
Object:			
Customer:			
Order-Nr.:	Date:	Releasesignatur:	
Dimensional Drawing	Scale %	Drawn	04/04/2024 MURO
Operator: Profilsystem Execution			
iMotion 2302 LR 32THERM RC2 MPVF ER MF			
TORMAX AUTOMATIC TORMAX a Division of LANDERT Group AG CH-8180 Bulach-Zurich			Document number: T3_390_182
			Index E

LB1=2W+S+180
LB=2W+42+S
W=(LB-42-S)/2
LVmin=LB1+x
LKmin=LVmin
FB1=W+32
FB=W+S+65
GB1=FB1-91
GB=FB-55
FH1=LH+28.5
FH=LH-10
GH1=FH1-95
GH=FH-95

** = without insulating attachment