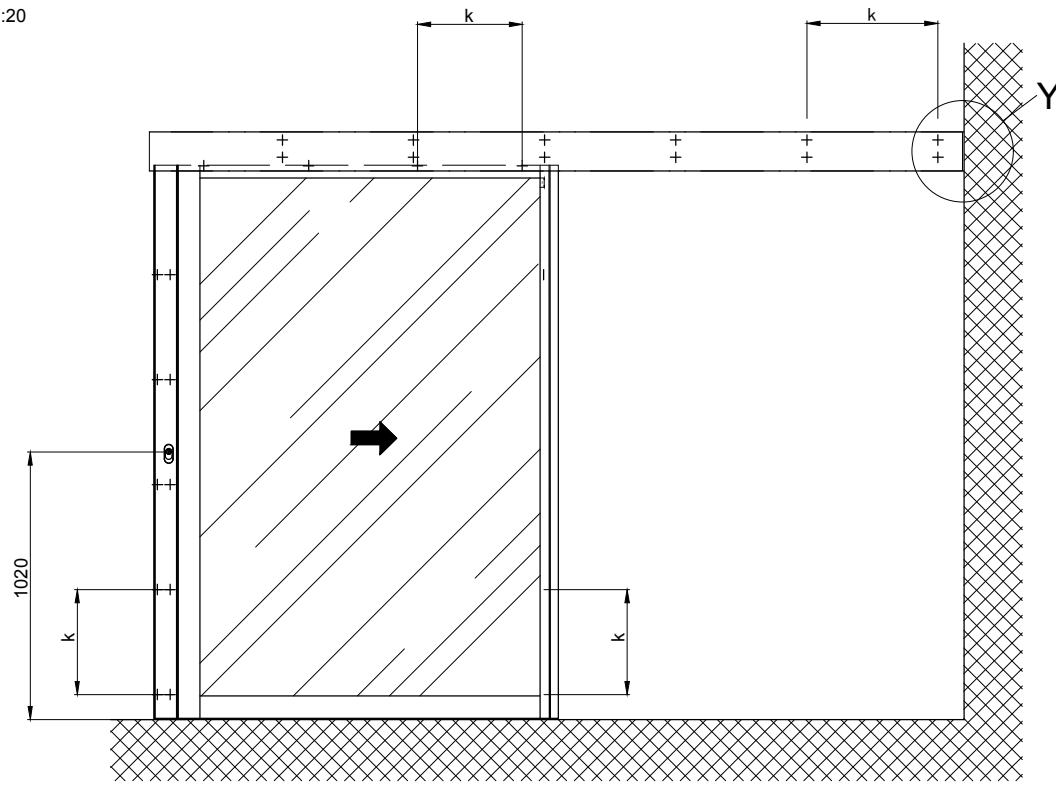
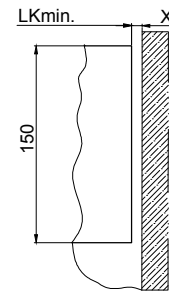


1:20

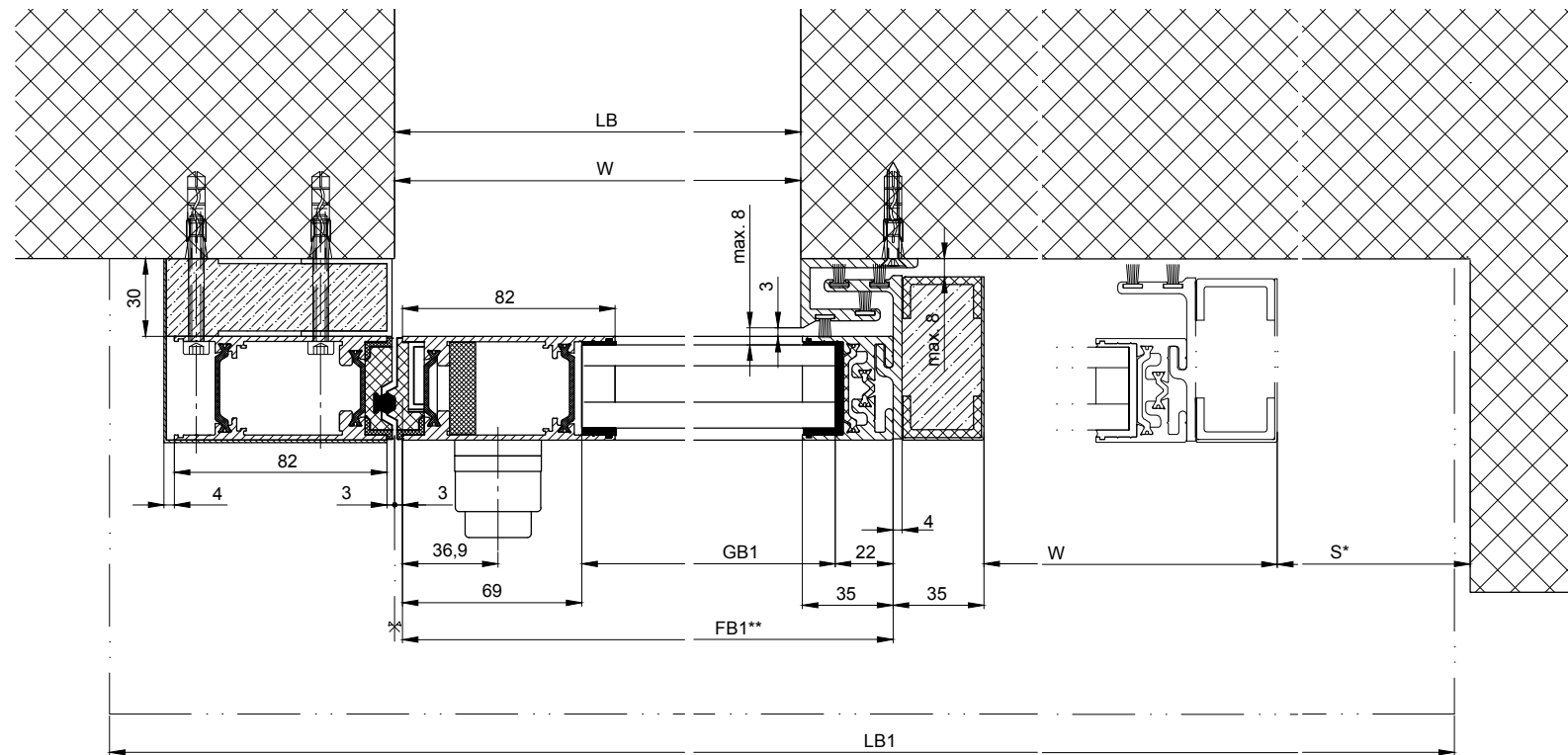
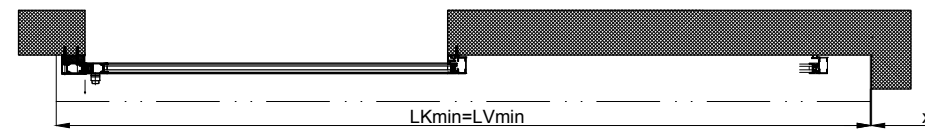
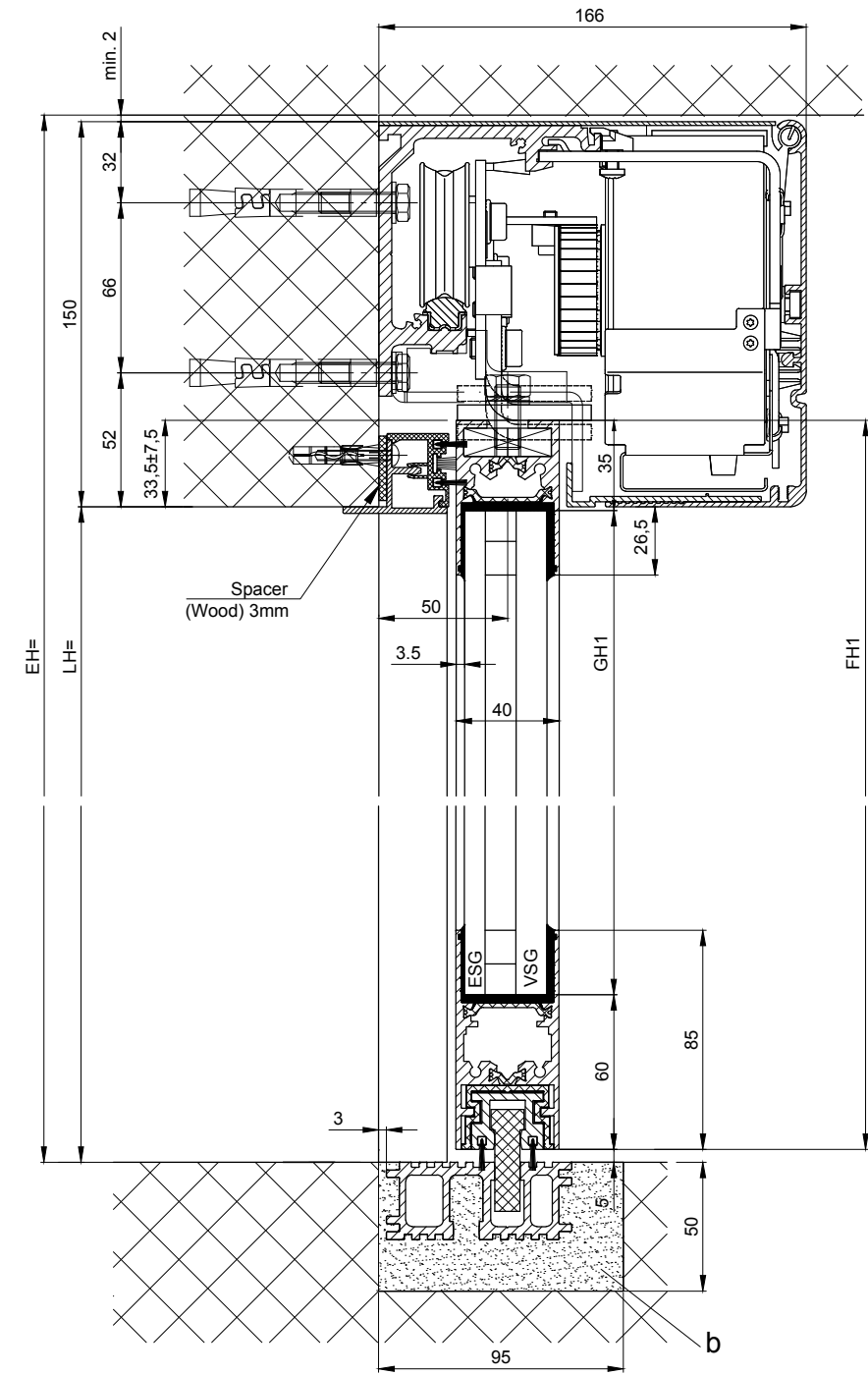


**Detail Y**

Wall clearance without side plate  $x=14\pm 6$



Note: Wall clearance with side plate  $x=\text{min.}88$



b) Carried out by others  
 k) Distance / type and number of screw connections are selected according to the building structure and strength required.  
 Variants see additional sheets

* Safety distance according to national regulations			
Anodize/color	layer thickness:	Additional info:	
	RAL		
Object:			
Customer:			
Order-Nr.:	Date:	Releasesignatur:	
Dimensional Drawing	Scale	Drawn	16.11.18 REFL
	%	ok to print	
Operator: Profilsystem	Execution		
iMotion 2302 LR 32THERM RC2 MPVF ER OF			
TORMAX is a division and a registered trademark of Landert Group AG, CH-8180 Bülach-Zürich			Document number:
			T3_390_185
			Index D

LB1=2W+S+180
W=(LB1-S-180)/2
LB=W
LVmin=LB1-x
LKmin=LVmin
FB1=W+32
GB1=FB-91
FH=LH+28.5
GH=FH-95

\*\*= without insulating attachment