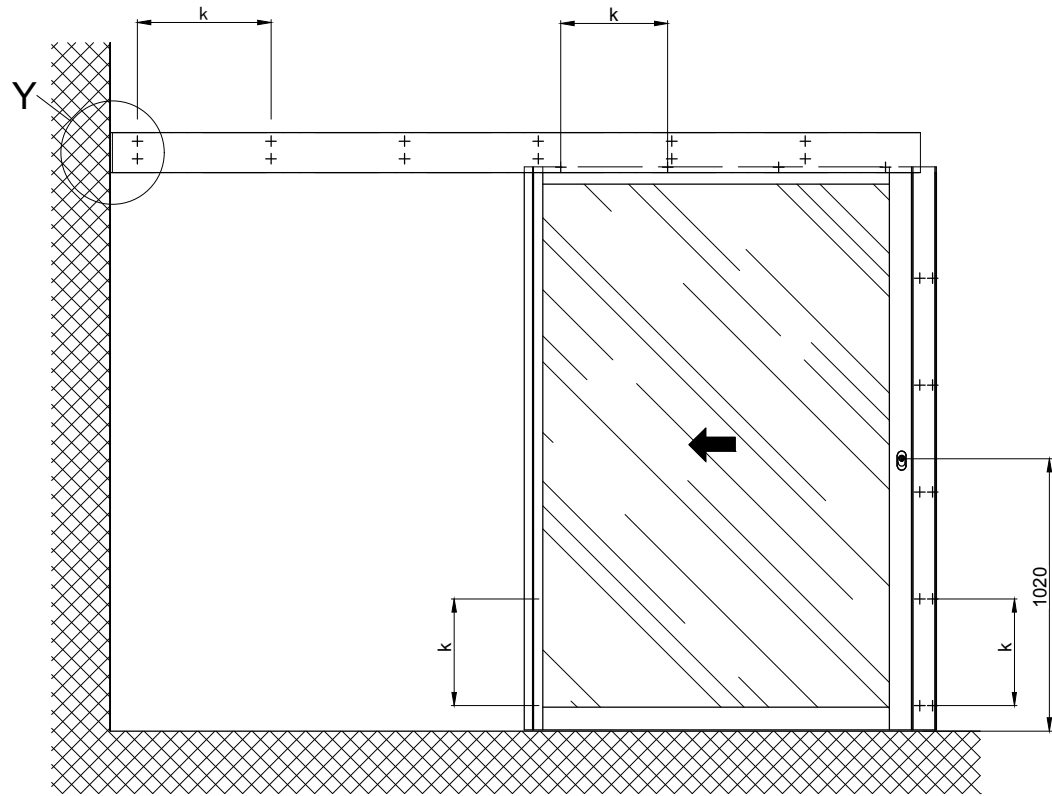
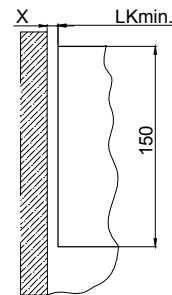


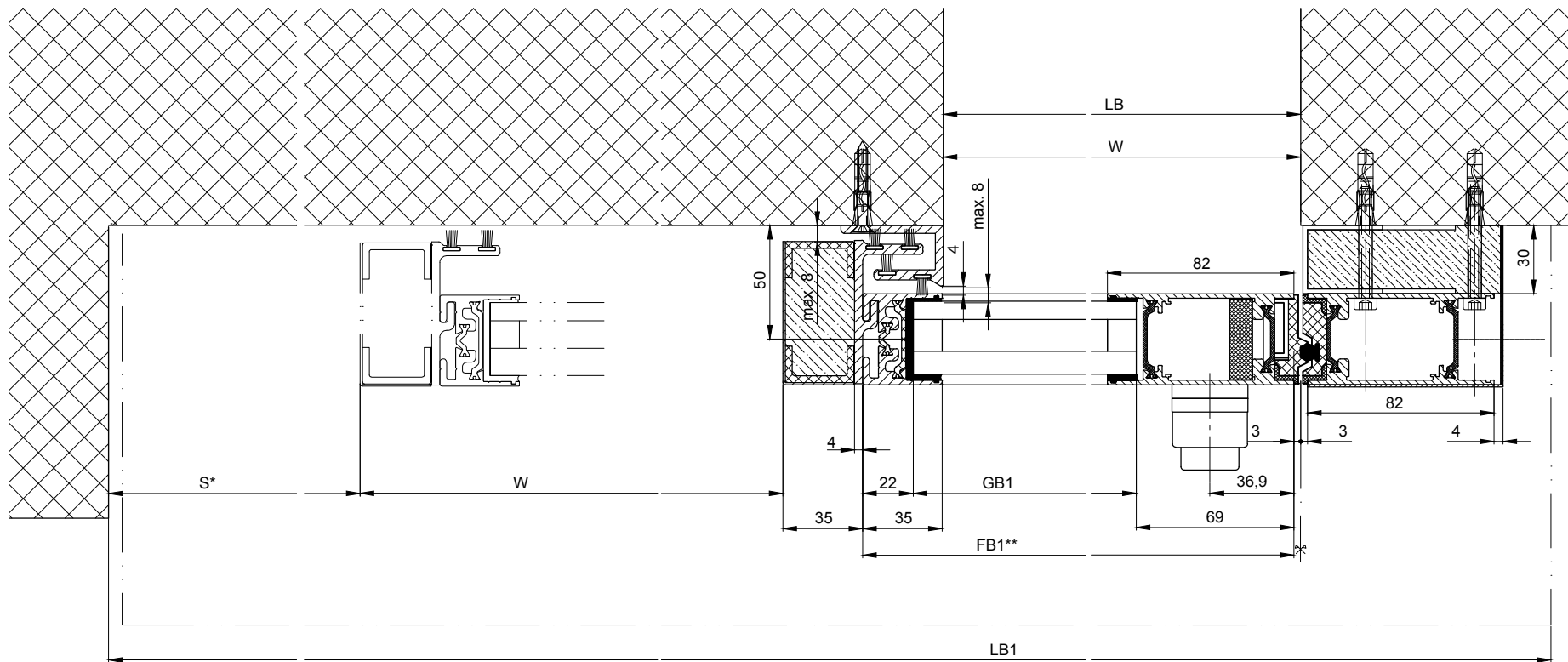
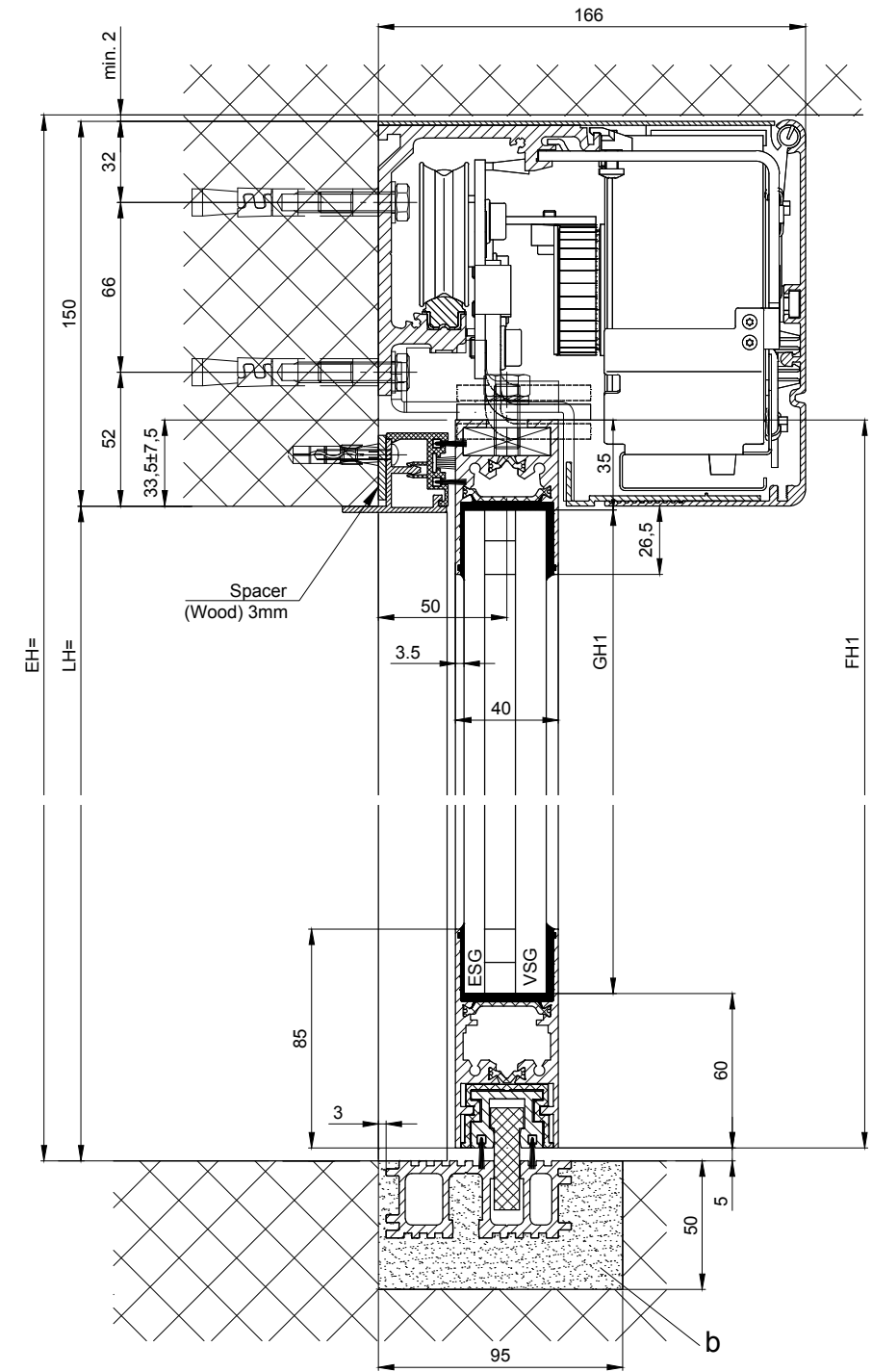
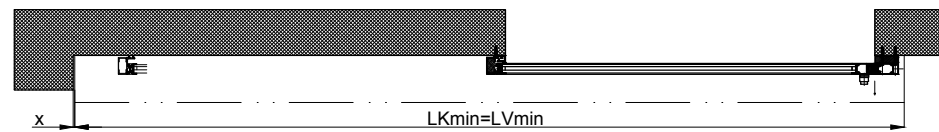
1:20



Detail Y
Wall clearance without side plate $x=14\pm 6$



Note: Wall clearance with side plate $x=\text{min.}88$



** = without insulating attachment

b) Carried out by others
k) Distance / type and number of screw connections are selected according to the building structure and strength required.
Variants see additional sheets

* Safety distance according to national regulations

LB1=2W+S+180	
LB=W+1	
W=(LB1-S-180)/2	
LVmin=LB1-x	
LKmin=LVmin	
FB1=W+32	
GB1=FB1-91	
FH=LH+28.5	
GH=FH-95	

Anodize/color	layer thickness:	Additional info:
	RAL	
Object:		
Customer:		
Order-Nr.:	Date:	Releasesignatur:
Dimensional Drawing	Scale	Drawn
	%	ok to print
Operator: Profilsystem Execution		
iMotion 2302 LR32 THERM RC2 MPVF EL OF		
TORMAX AUTOMATIC		Document number:
TORMAX is a division and a registered trademark of Landert Group AG, CH-8180 Bülach-Zürich		T3_390_184
Index		D