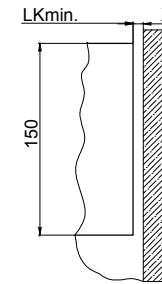
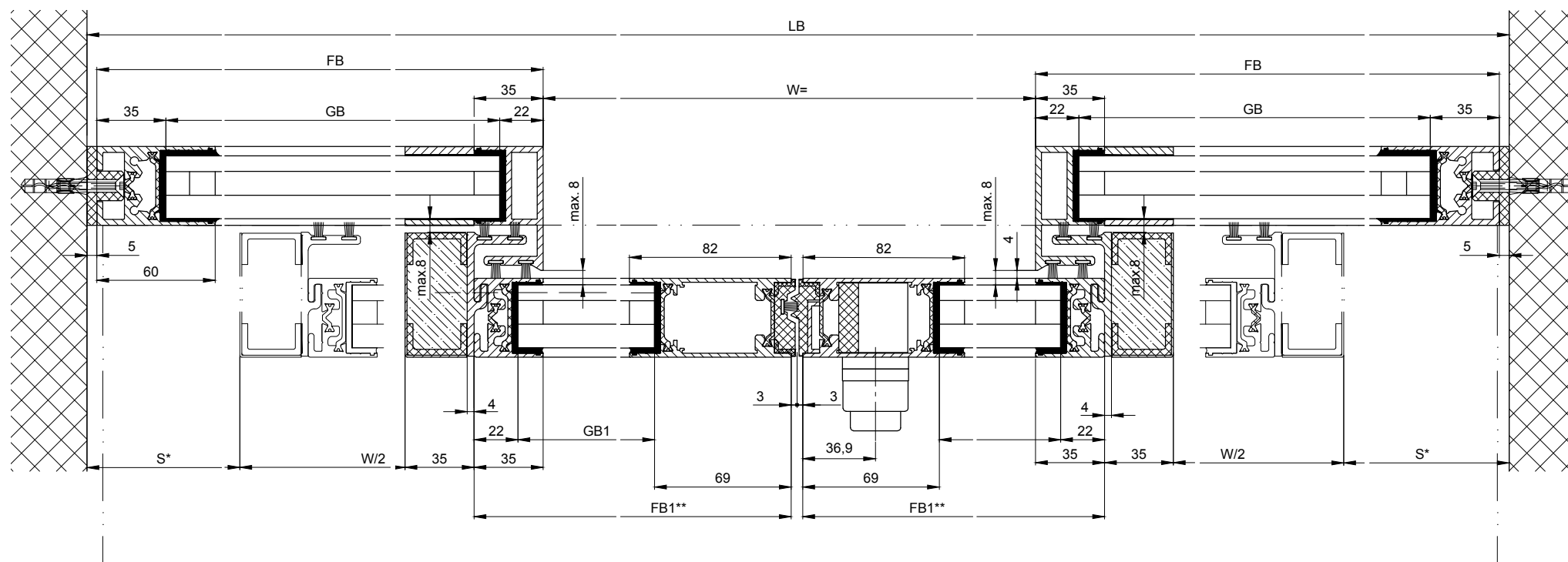
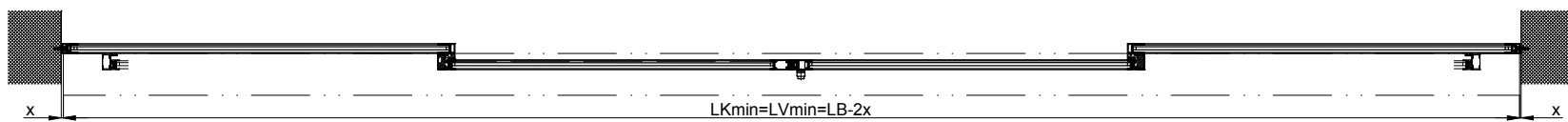
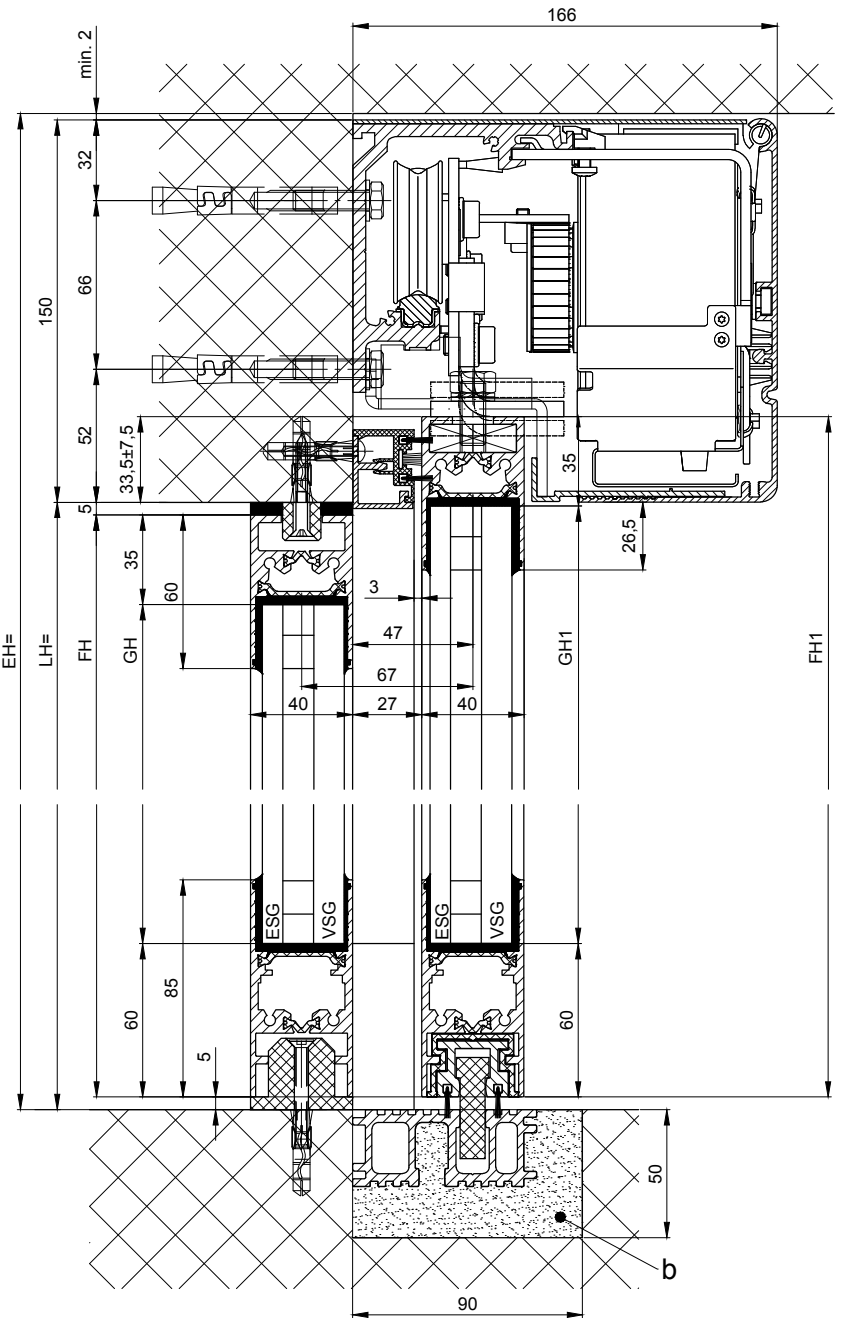


**Detail Y**

Wall clearance without side plate  $x = \min. 8$



Note: Wall clearance with side plate  $x = \min. 88$



b) Carried out by others  
k) Distance / type and number of screw connections are selected according to building structure and strength required.  
Variants see additional sheets

* Safety distance according to national regulations			
Anodize/color:	layer thickness:	Additional info:	
	RAL		
Object:			
Customer:			
Order-Nr.:	Date:	Releasesignatur:	
GB1=FB1-91			
GB=FB-57			
FH1=LH+28.5			
FH=LH-10			
GH1=FH1-95			
GH=FH-95			
Operator typ: Profilsystem Execution		Scale	Drawn
iMotion 2302 LR32 THERM RC2 MPVF EB MF		%	16.11.18 REFL
TORMAX AUTOMATIC		ok to print	
TORMAX is a division and a registered trademark of Landert Group AG, CH-8180 Bülach-Zürich		Document number.:	Index
		T3_390_180	D

\*\*= without insulating attachment