

**Variants of the drive cross section:**  
 - Header profile 2101/2201/2202  
 - Header profile 2101/2201/2202 H100 (according to drawing)

The door leaves must be made from material which do not bear any potential risk of injury in any case of breakage (for example single sheet toughened safety glass, compound safety glass etc.). Transparent door leaves must be clearly labelled to be recognised as such.

\* Safety margin according to national regulation

Anodize/color: layer thickness: Additional info:  
 RAL : \_\_\_\_\_

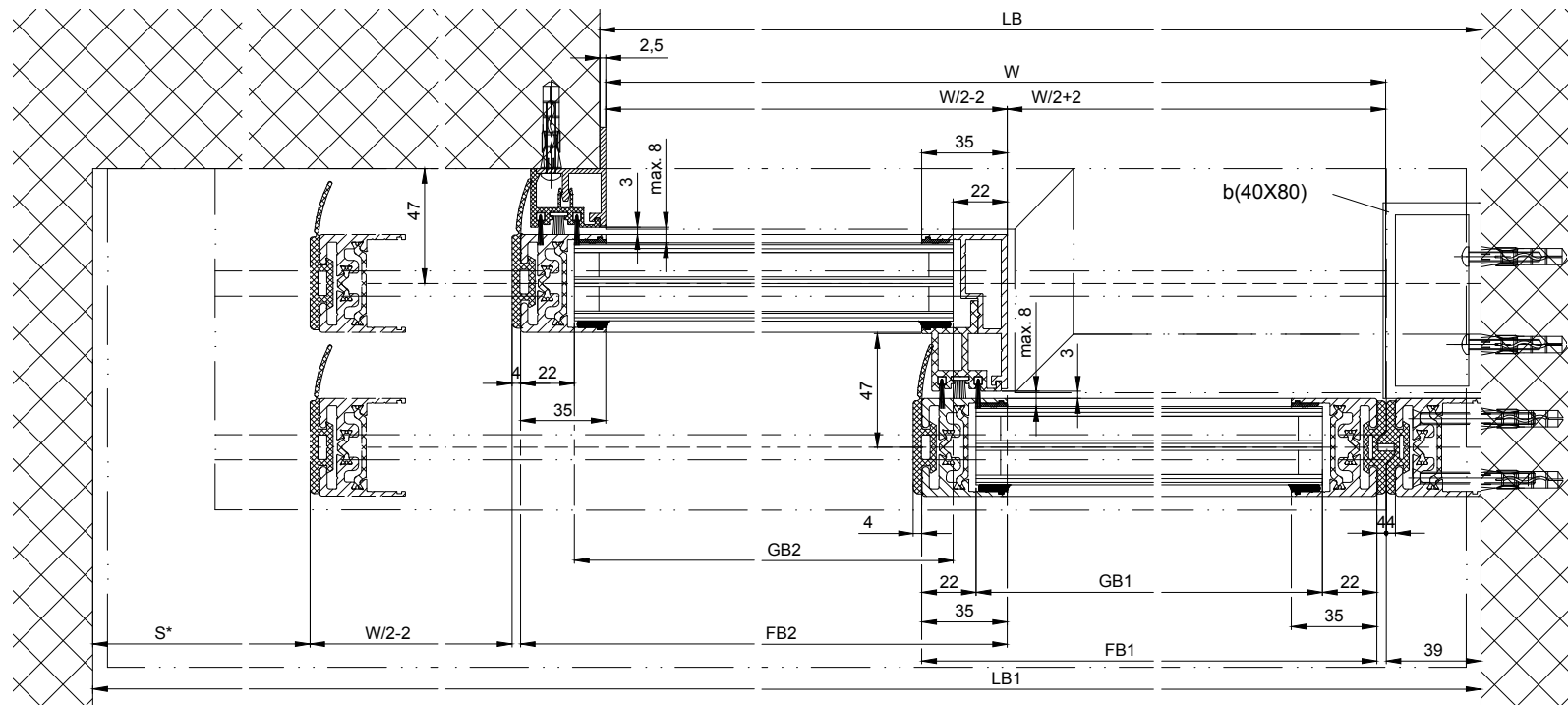
Object:  
 Customer:

Order-Nr.: Date: Releasesignatur:

Scale: Drawn: 22.11.19 MURO  
 % ok to print

Operator typ: Profilsystem Execution  
**2203 TL-LR32THERM without fixedwing, lintel**

**TORMAX** AUTOMATIC TORMAX a Division of LANDERT Group AG  
 CH-8180 Bülach-Zürich Document number: Index  
**T3\_390\_759** .



b Executed on site  
 k1 Distance, type and number of fixing screws are to be defined due to the building's material structure and the necessary stability

LB1=1.5W+76+S	FB1=W/2+33
W=(LB1-S-76)/1.5	FB2=W/2+33
LB=W+41.5	GB1=FB1-44
LVmin=LB1-12	GB2=FB2-44
LKmin=LVmin-2	
	FH1=FH2=LH+17.5
	GH1=FH1-95
	GH2=FH2-95