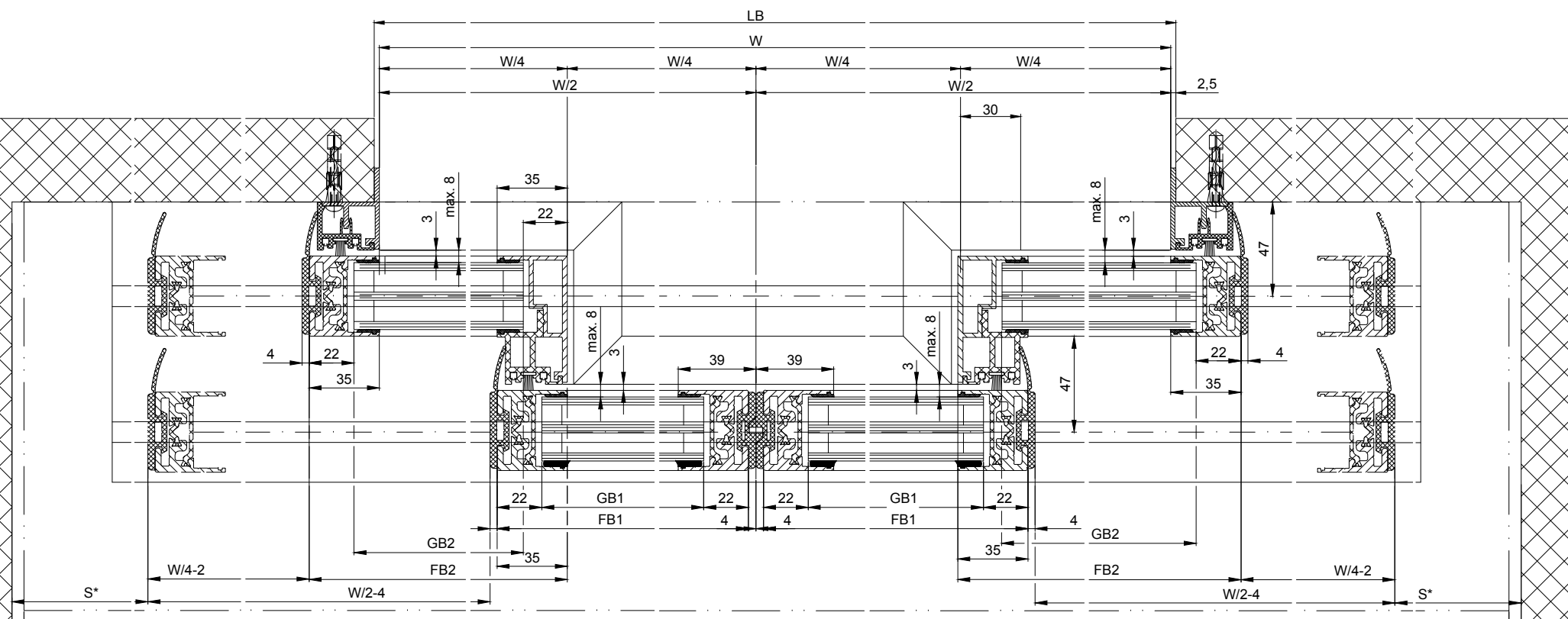
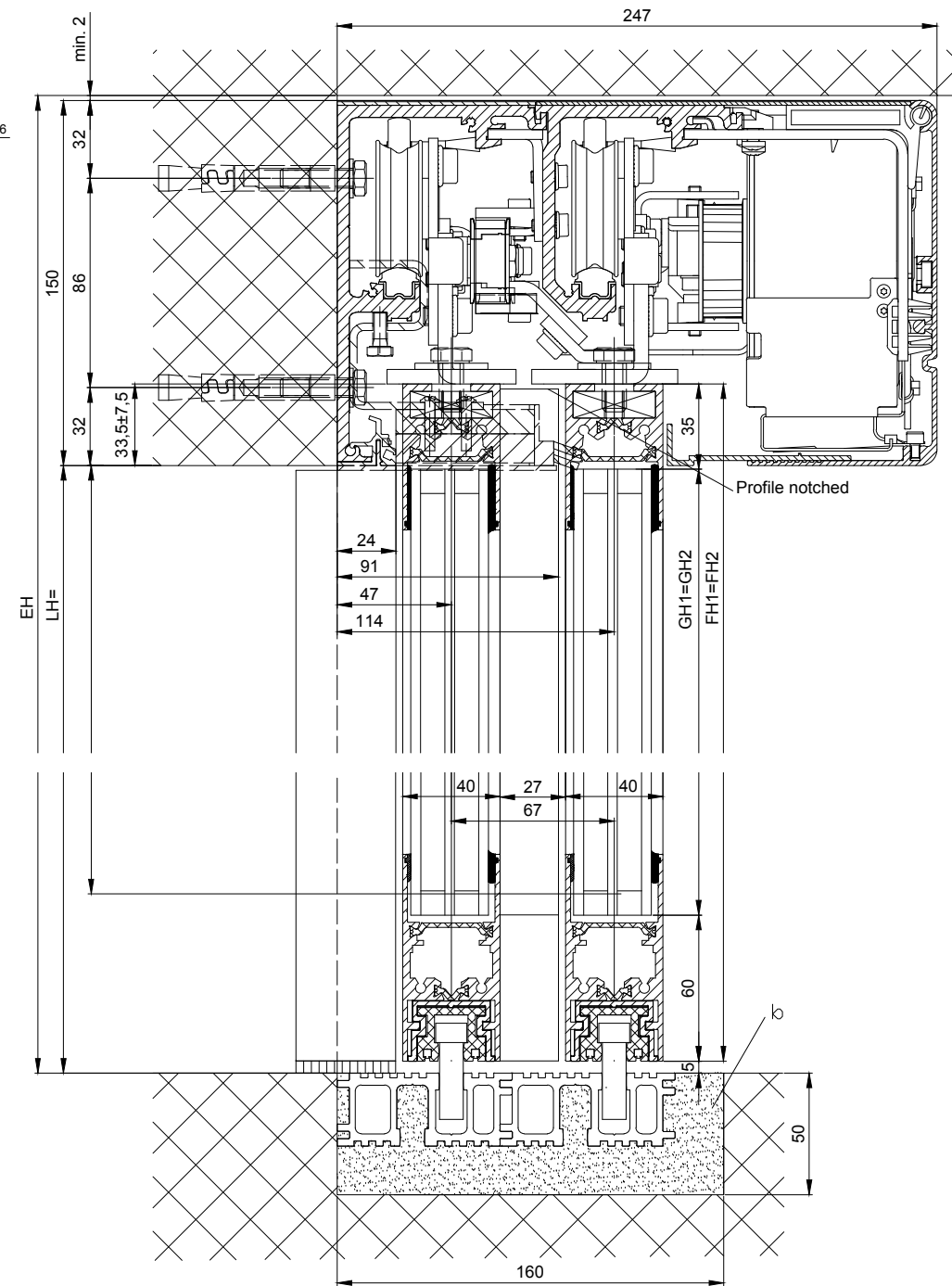
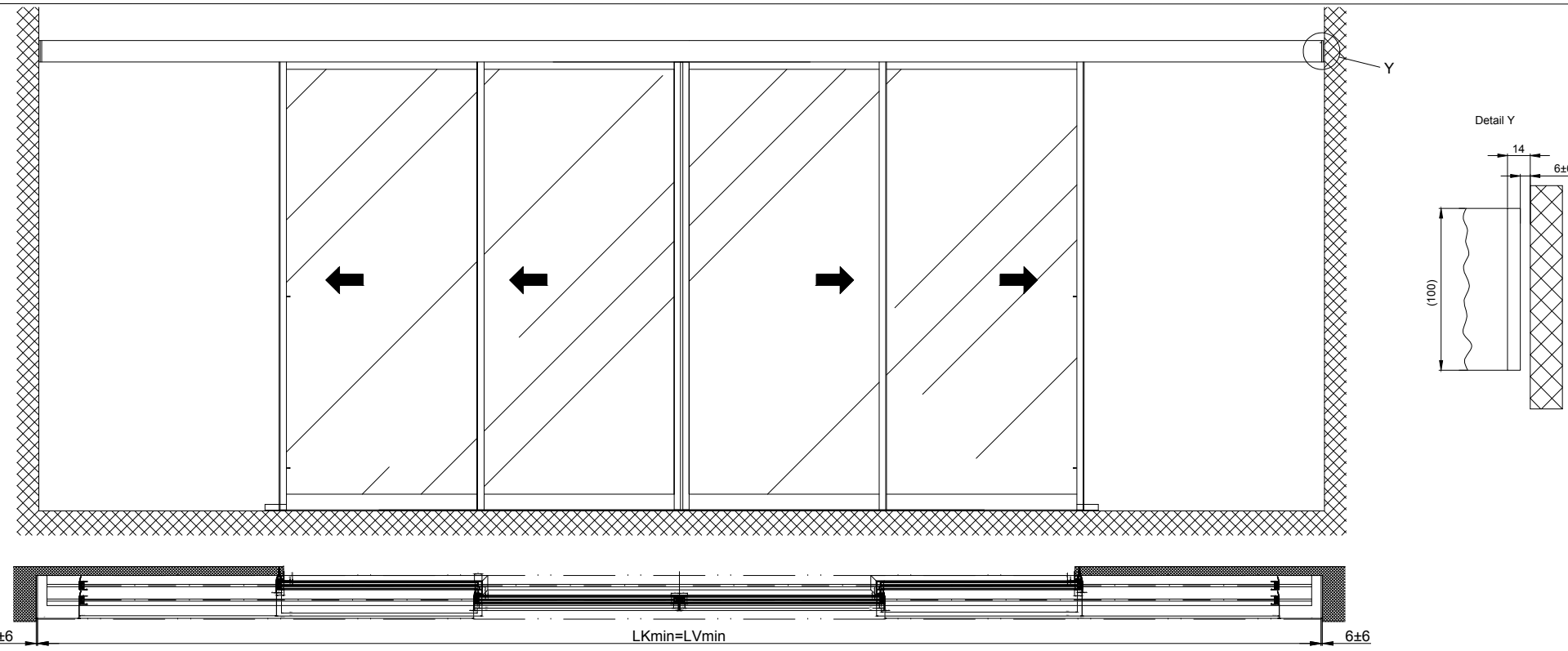


(1:20)



b Executed on site  
 Variants of the drive cross section:  
 - Header profile 2101/2201/2202  
 - Header profile 2101/2201/2202 H100 (according to drawing)

The door leaves must be made from material which do not bear any potential risk of injury in any case of breakage (for example single sheet toughened safety glass, compound safety glass etc.). Transparent door leaves must be clearly labelled to be recognised as such.

\* Safety margin according to national regulation

$LB1=1,5W+78+2s$	$FH1=FH2=LH+17.5$
$W=(LB1-2s-78)/1.5$	$GH1=FH1-124$
$LKmin=LVmin=LB1-28$	$GH2=FH2-124$
$FB1=W/4+39$	
$FB2=W/4+39$	
$GB1=FB1-38$	
$GB2=FB2-38$	

Anodize/color: layer thickness: \_\_\_\_\_ Additional info: \_\_\_\_\_  
 RAL: \_\_\_\_\_

Object: \_\_\_\_\_

Customer: \_\_\_\_\_

Order-Nr.: \_\_\_\_\_ Date: \_\_\_\_\_ Releasesignatur: \_\_\_\_\_

Operator: Profilsystem Execution

2203 TB-LR32 THERM without fixedwing, lintel

Scale: \_\_\_\_\_ Drawn: 11.02.2020 MUR0  
 % ok to print

TORMAX AUTOMATIC TORMAX a Division of LANDERT Group AG CH-8180 Bulach-Zürich Document number: T3-390-795 Index