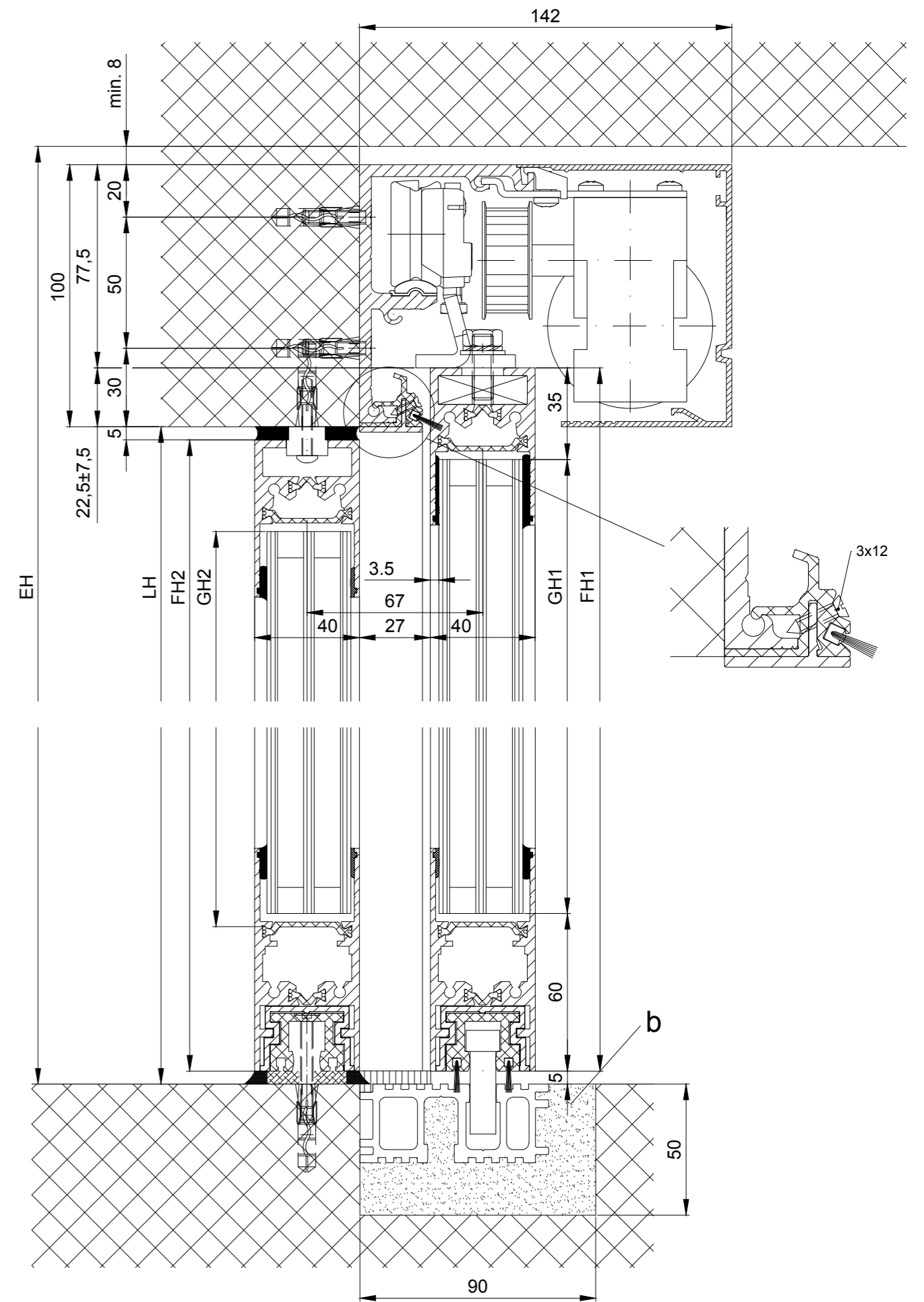
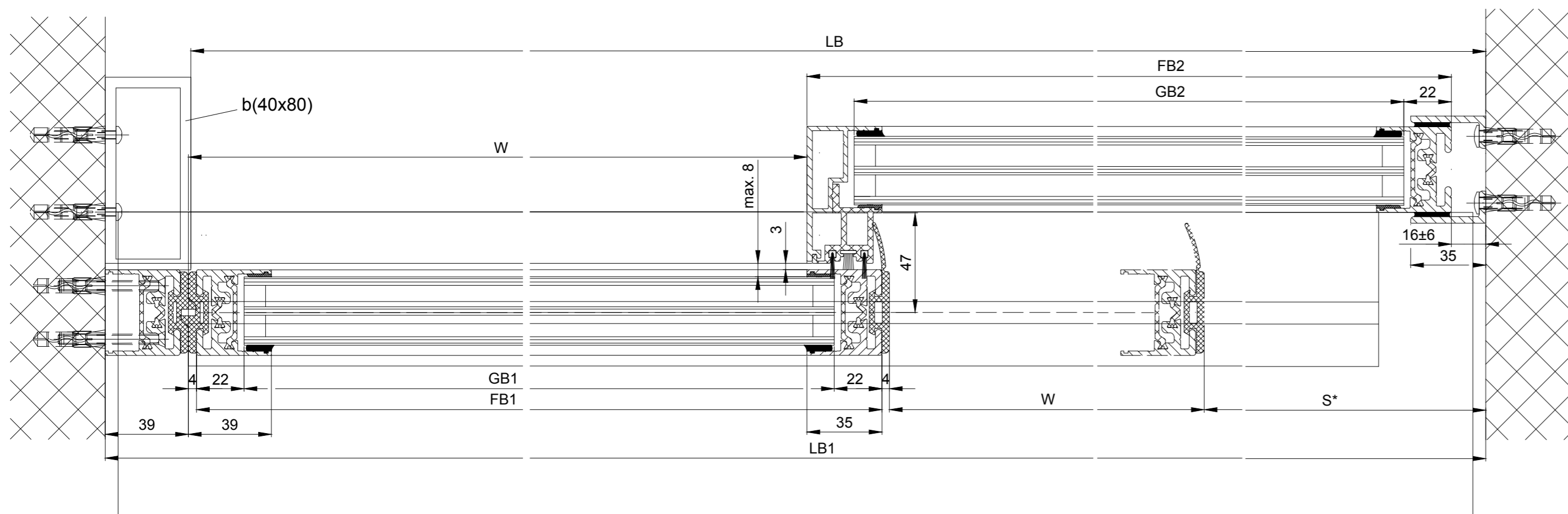
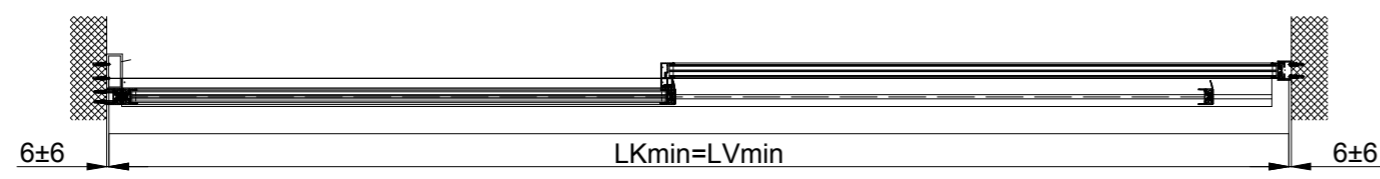
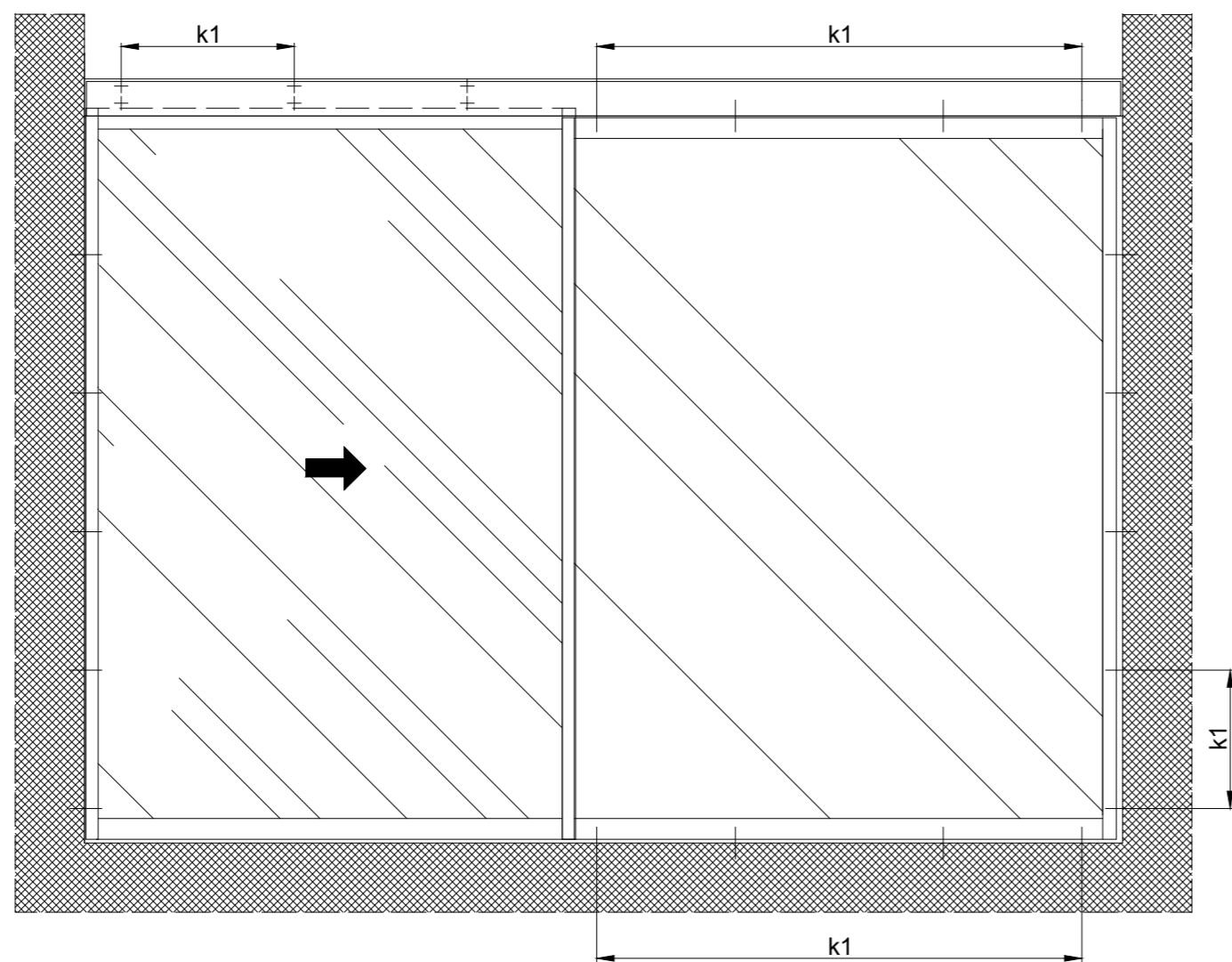


1:20



b Executed on site
 k1 Distance, type and number of fixing screws are to be defined due to the building's material structure and the necessary stability

- Variants of the drive cross section:**
 - Header profile 2101/2201/2202
 - Header profile 2101/2201/2202 H100 (according to drawing)

The door leaves must be made from material which do not bear any potential risk of injury in any case of breakage (for example single sheet toughened safety glass, compound safety glass etc.). Transparent door leaves must be clearly labelled to be recognised as such.

* Safety margin according to national regulation

$LB1=2W+S+78$

$W=(LB-2S-78)/2$

$LKmin=LVmin$

$FB1=W+31$

$FB2=W+S+23$

$GB1=FB1-44$

$GB2=FB2-44$

$FH1=LH+17.5$

$FH1=LH-10$

$GH1=FH1-95$

$GH2=FH2-95$

Anodize/color: layer thickness: _____ Additional info: _____
 RAL: _____

Object: _____

Customer: _____

Order-Nr.: _____ Date: _____ Releasesignatur: _____

Scale: _____ Drawn: 22.11.19 MURO
 % ok to print

Operatortyp: Profilsystem Execution
2203 ER-LR32THERM with fixedwing, lintel

TORMAX TORMAX a Division of LANDERT Group AG
 AUTOMATIC CH-8180 Bülach-Zürich
 Document number: **T3_390_751** Index