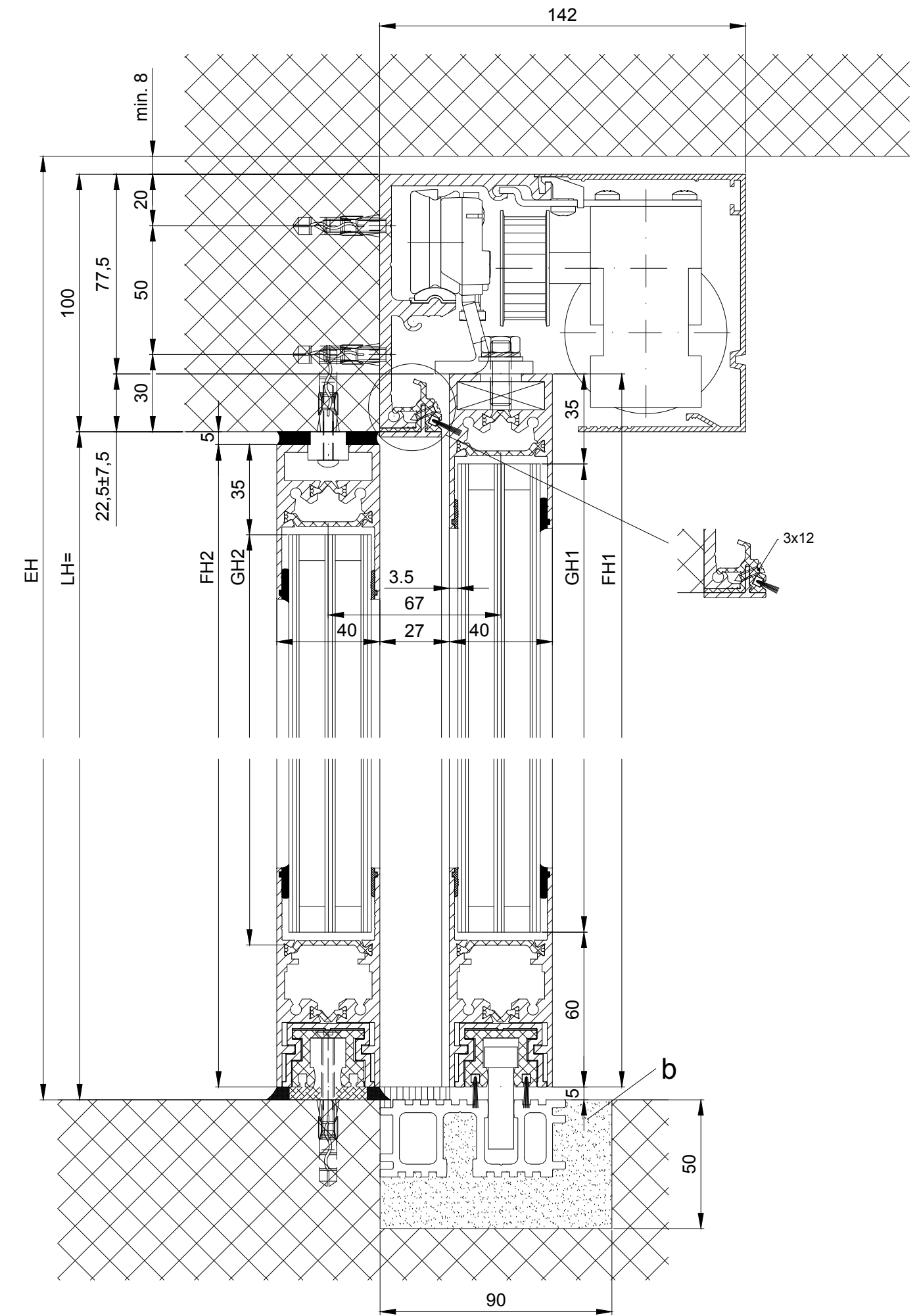
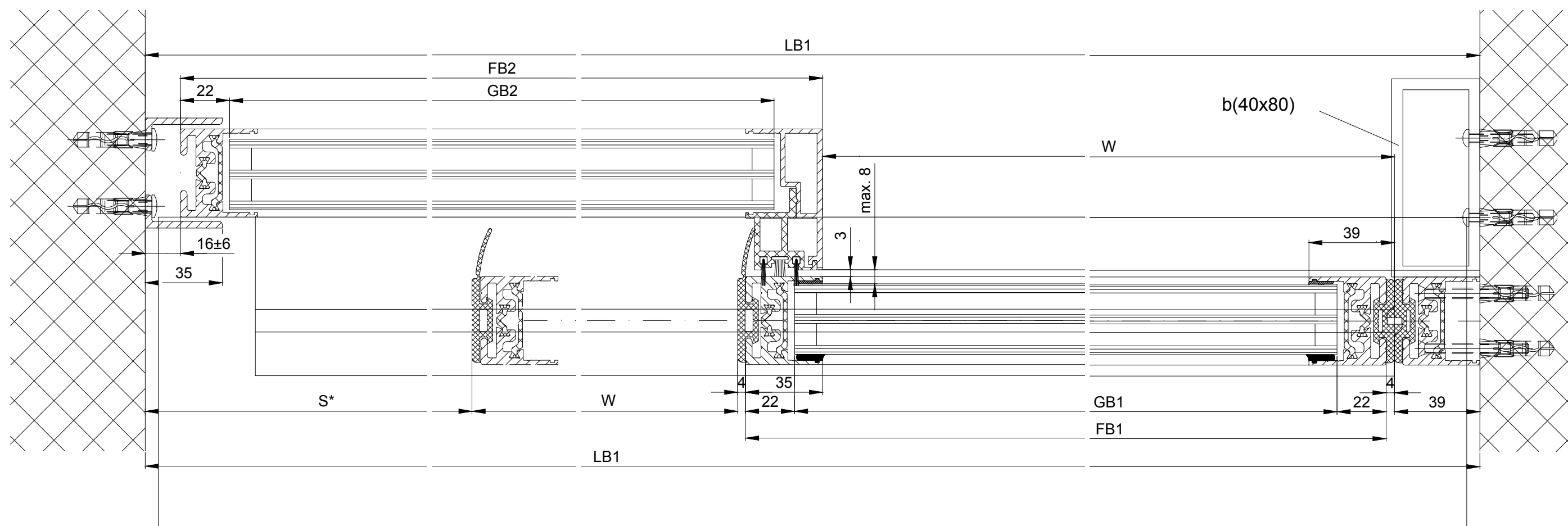
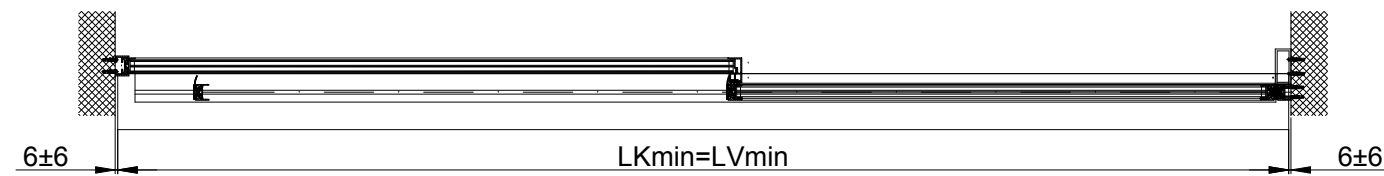
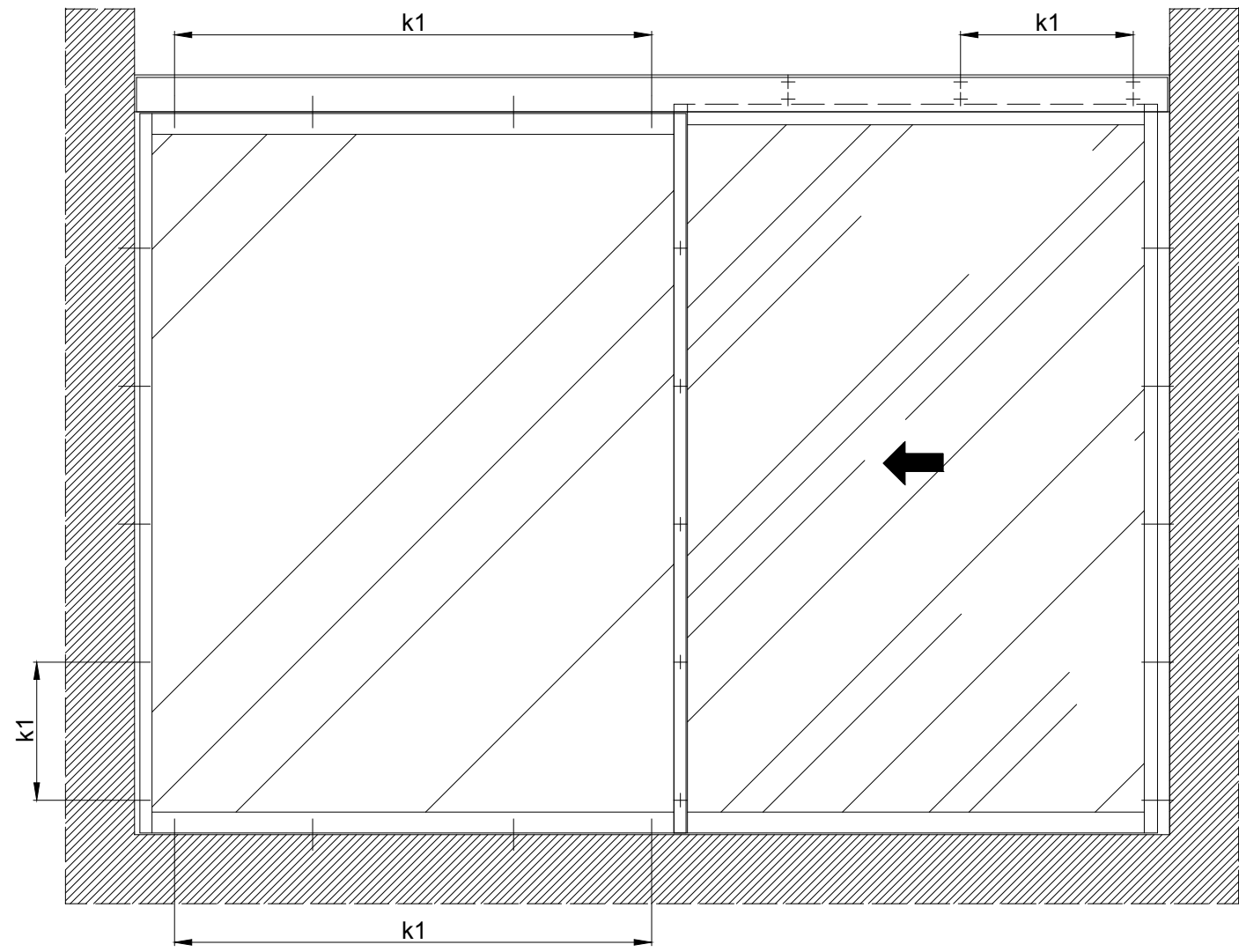


1:20



Variants of the drive cross section:

- Header profile 2101/2201/2202
- Header profile 2101/2201/2202 H100 (according to drawing)

b Executed on site

k1 Distance, type and number of fixing screws are to be defined due to the building's material structure and the necessary stability

The door leaves must be made from material which do not bear any potential risk of injury in any case of breakage (for example single sheet toughened safety glass, compound safety glass etc.). Transparent door leaves must be clearly labelled to be recognised as such.

* Safety margin according to national regulation

Anodize/color layer thickness: _____ Additional info: _____
RAL: _____

Object:

Customer:

Order-Nr.:

Date:

Releasesignatur:

$LB1=2W+S+78$

$W=(LB-2S-78)/2$

$LKmin=LVmin=LB1-28$

$FB1=W+S+31$

$FB2=W+S+23$

$GB1=FB1-44$

$GB2=FB2-44$

$FH1=LH+17.5$

$FH1=LH-10$

$GH1=FH1-95$

$GH2=FH2-95$

Scale	Drawn	19.11.19	MURO
%	ok to print		

Operator typ: Profilsystem Execution
2203 EL-LR32THERM with fixedwing, lintel

Document number: **T3_390_794** Index

TORMAX AUTOMATIC TORMAX a Division of LANDERT Group AG CH-8180 Bülach-Zürich