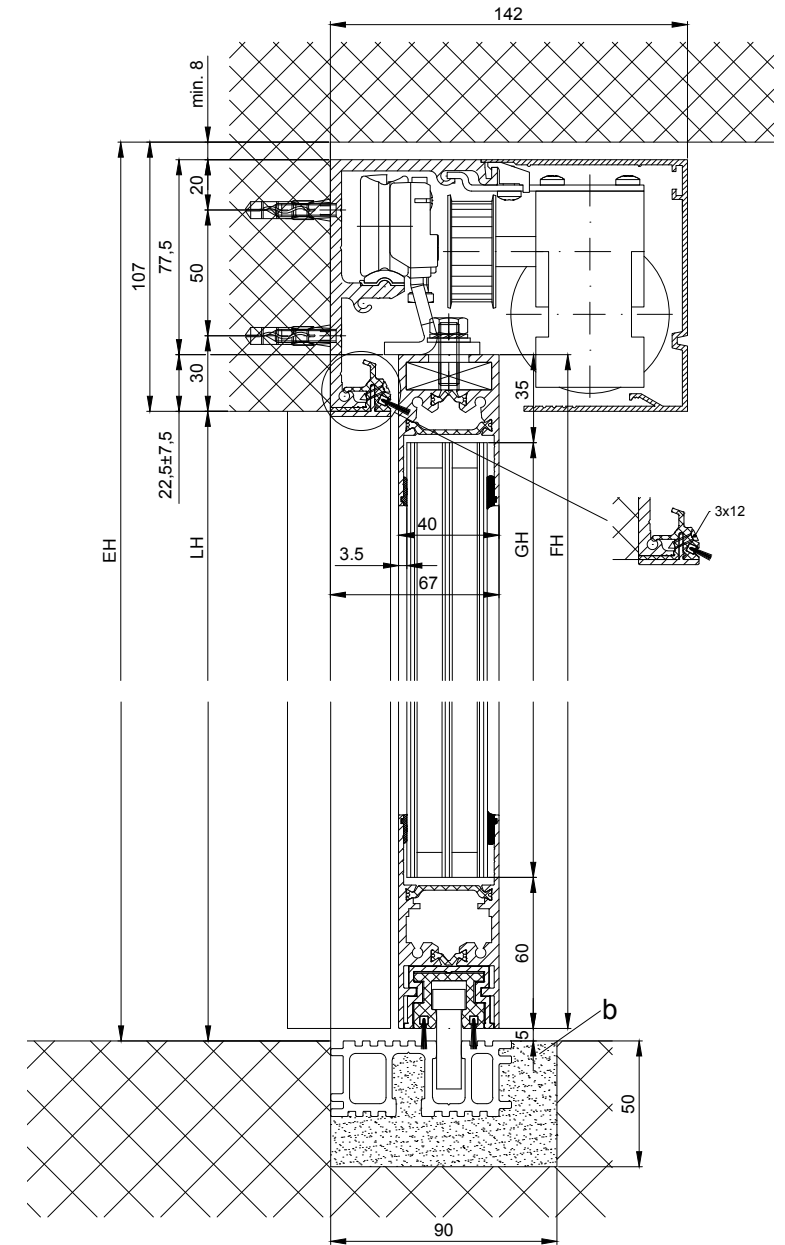
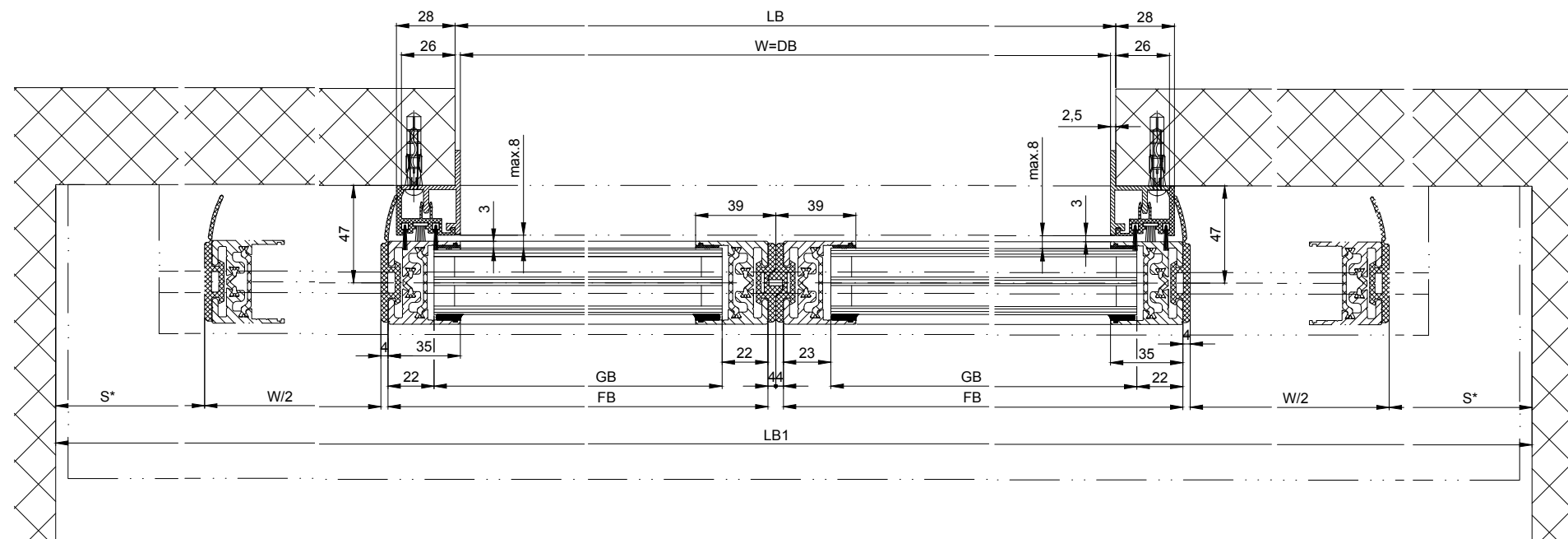
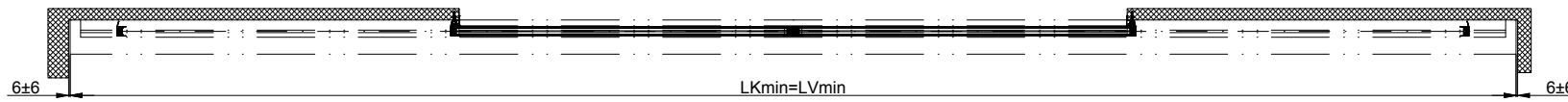
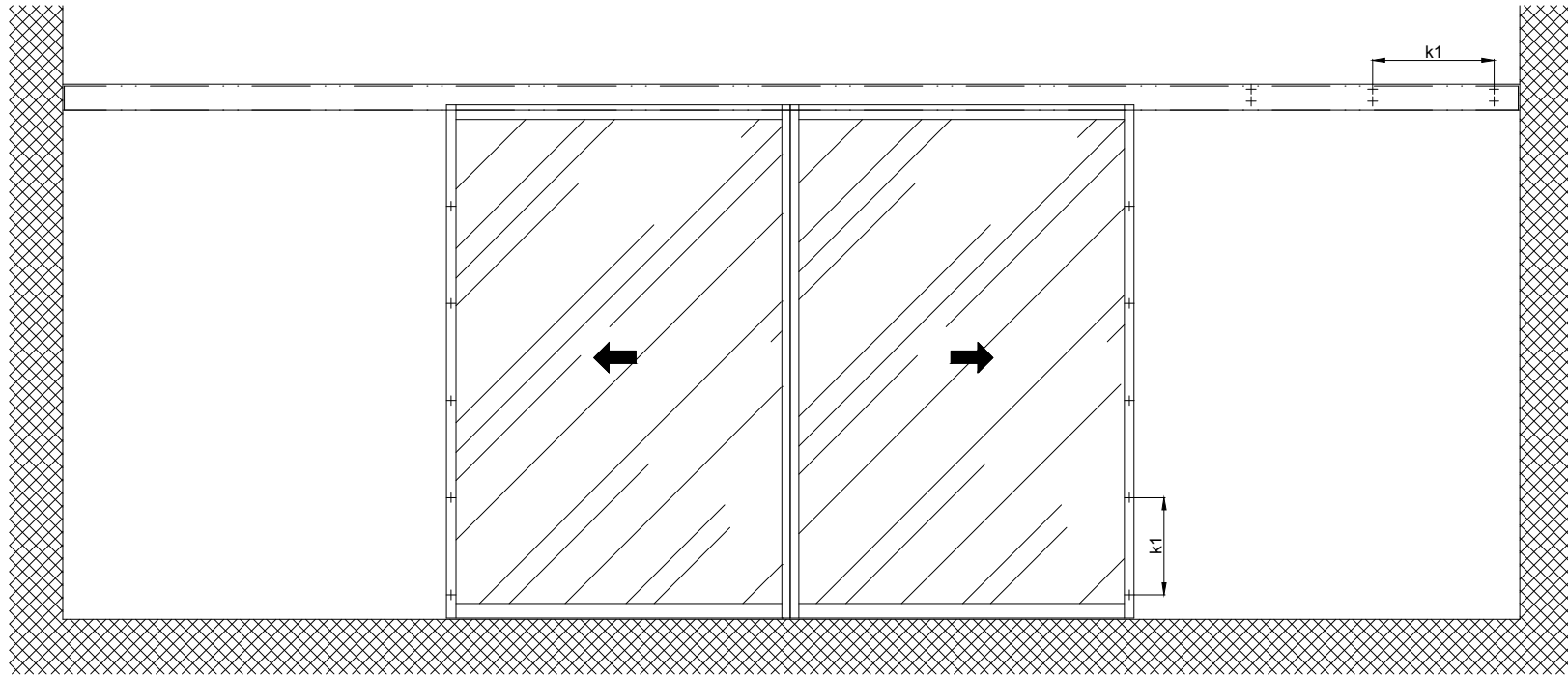


1:20



b Executed on site
 k1 Distance, type and number of fixing screws are to be defined due to the building's material structure and the necessary stability

- Variants of the drive cross section:**
 - Header profile 2101/2201/2202
 - Header profile 2101/2201/2202 H100 (according to drawing)

The door leaves must be made from material which do not bear any potential risk of injury in any case of breakage (for example single sheet toughened safety glass, compound safety glass etc.). Transparent door leaves must be clearly labelled to be recognised as such.

* Safety margin according to national regulation
 Anodize/color: layer thickness: Additional info:
 RAL

LB1=2W+2S+78	
W=(LB1-2S-78)/2	
LKmin=LVmin	
FB=W/2+31	
GB=FB-44	
FH=LH+17.5	
GH=FH-95	

Object: _____
 Customer: _____
 Order-Nr.: _____ Date: _____ Release signatur: _____
 Scale: _____ %
 Drawn: _____ ok to print: _____
 22.11.19 MURO

Operator typ: Profilsystem Execution
2203 EB-LR32THERM without fixedwing, lintel
 TORMAX a Division of LANDERT Group AG
 CH-8180 Bülach-Zürich
 Document number: T3_390_755 Index