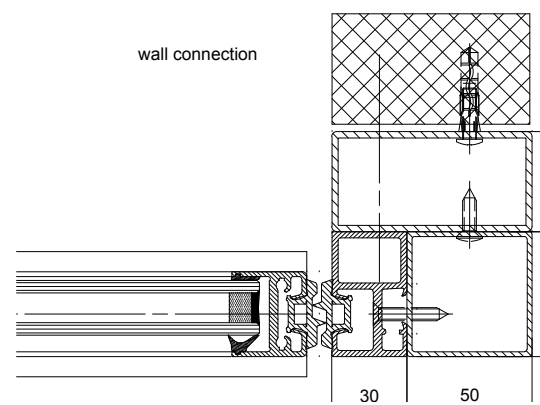
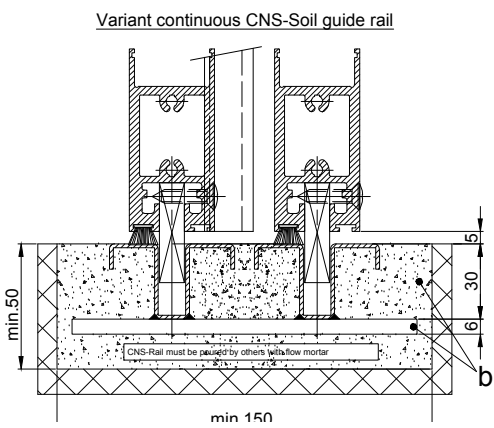
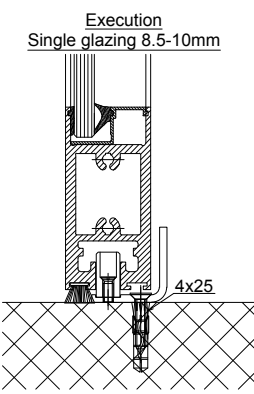


b Executed on site
Variants of the drive cross section:
 - Header profile 2101/2201/2202 (according to drawing)
 - Header profile 2101/2201/2202 H100

The door leaves must be made from material which do not bear any potential risk of injury in any case of breakage (for example single sheet toughened safety glass, compound safety glass etc.). Transparent door leaves must be clearly labelled to be recognised as such.

* Safety margin according to national regulation



$LB1=1,5W+S+77$	$FH1=FH2=LH+17.5$
$W=(LB1-S-77)/1,5$	$GH1=FH1-124$
	$GH2=FH2-124$
$LVmin=LKmin=LB1-22$	
$FB1=W/2+25$	
$FB2=W/2+30$	
$GB1=FB1-38$	
$GB2=FB2-38$	

Anodize/color:	layer thickness:	Additional info:
	RAL	
Object:		
Customer:		
Order-Nr.:	Date:	Releasesignatur:
Operator: Profilsystem Execution		Scale: %
2203-TL LR22B without fixedwing, lintel		Drawn: 28.11.19 MURO
		Document number: T3_390_784
TORMAX a Division of LANDERT Group AG		Index:
CH-8180 Bülach-Zürich		