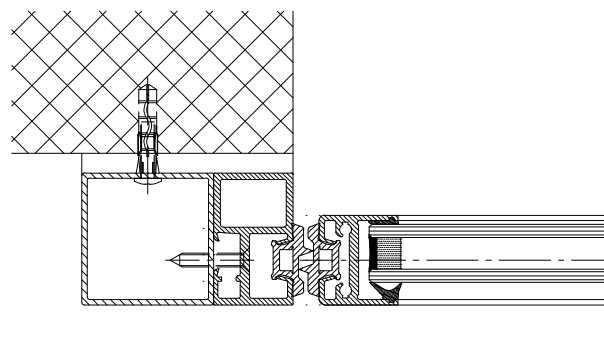
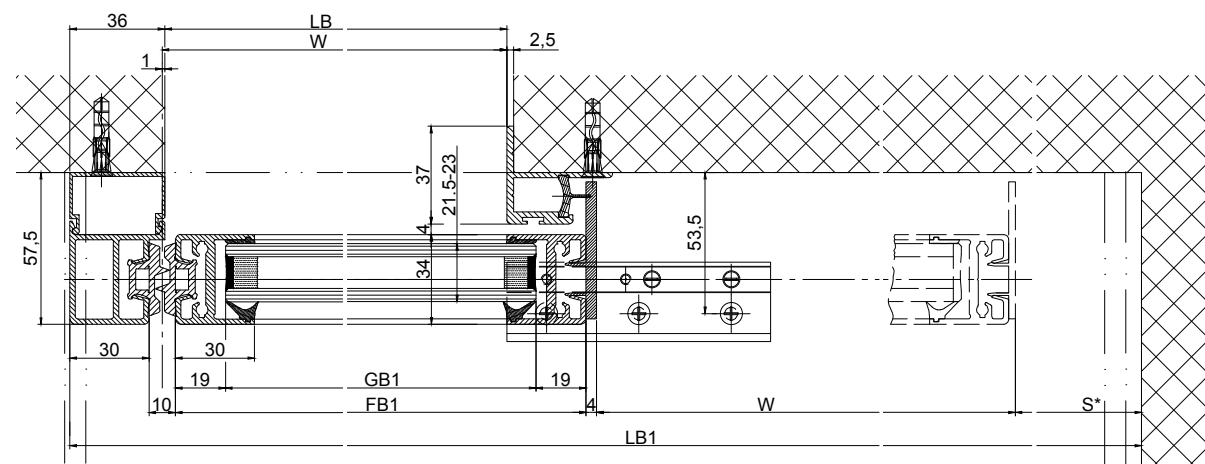
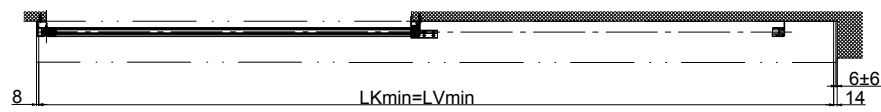
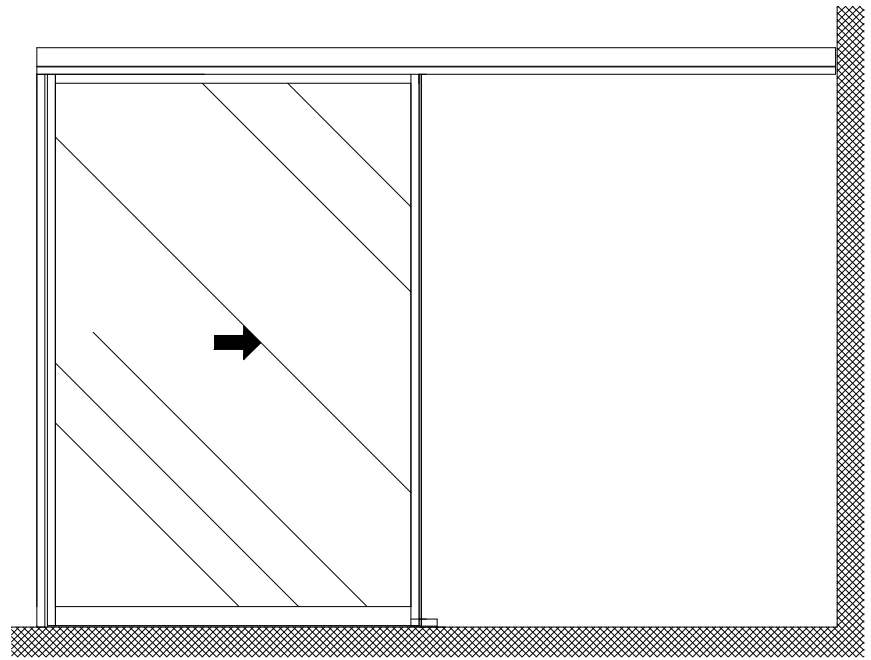
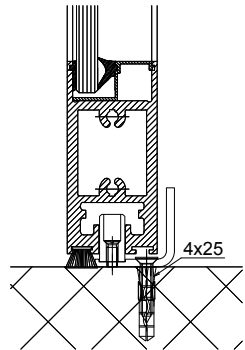


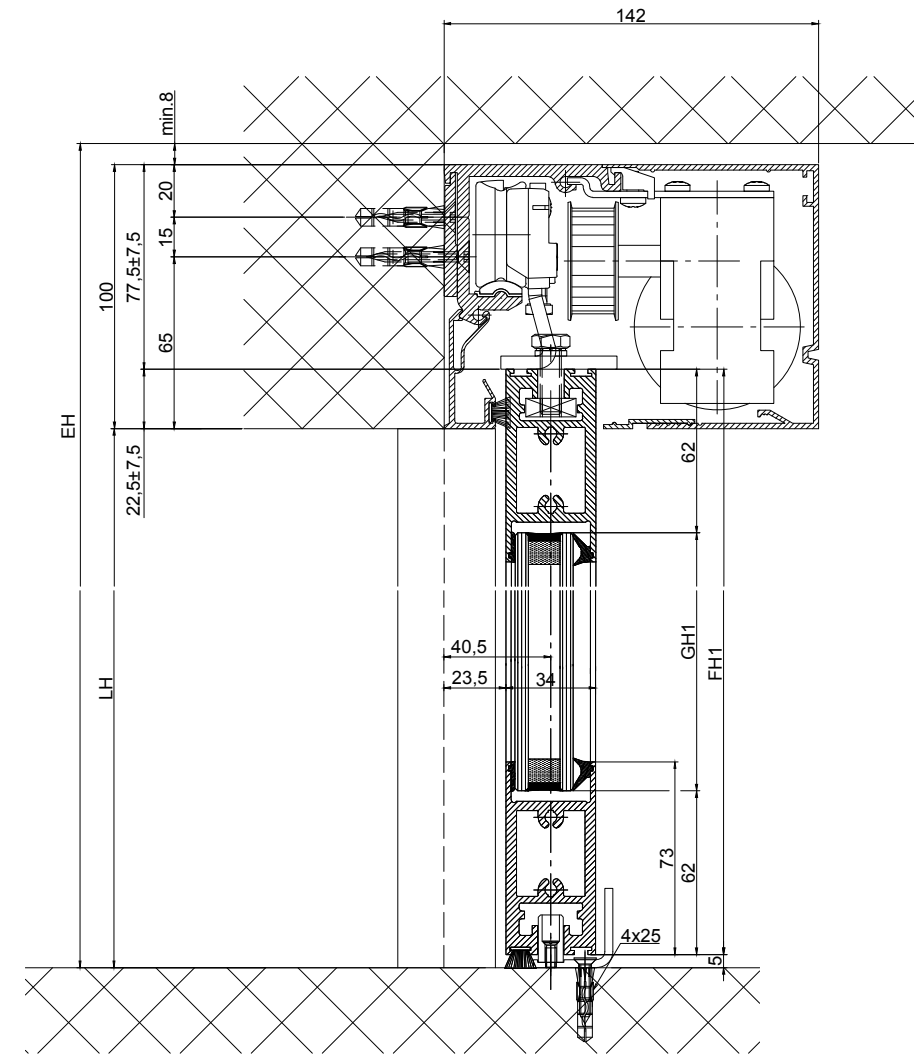
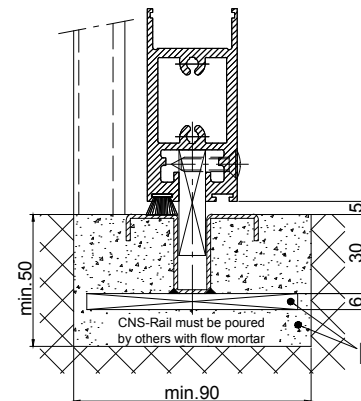
(1:20)



Execution
Single glazing 8.5-10mm



Variant continuous
CNS-Soil guide rail



Variants of the drive cross section:

- Header profile 2101/2201/2202 (according to drawing)
- Header profile 2101/2201/2202 H100

The door leaves must be made from material which do not bear any potential risk of injury in any case of breakage (for example single sheet toughened safety glass, compound safety glass etc.). Transparent door leaves must be clearly labelled to be recognised as such.

* Safety margin according to national regulation

b Executed on site

$LB1=2W+S+69$	
$LKmin=LB1-22$	
$LVmin=LKmin$	
$FB1=W+25$	
$GB1=FB1-38$	
$FH1=LH+17.5$	
$GH1=FH1-124$	

Anodize/color	layer thickness: _____	Additional info:
	RAL _____	
Object:		
Customer:		
Order-Nr.:	Date:	Releasesignatur:
Operator typ: Profilsystem Execution	Scale %	Drawn 27.11.19 MURO
2203-ER LR22B without fixedwing, lintel		ok to print
		Document number: T3_390_780
<small>TORMAX a Division of LANDERT Group AG CH-8180 Bülach-Zürich</small>		Index