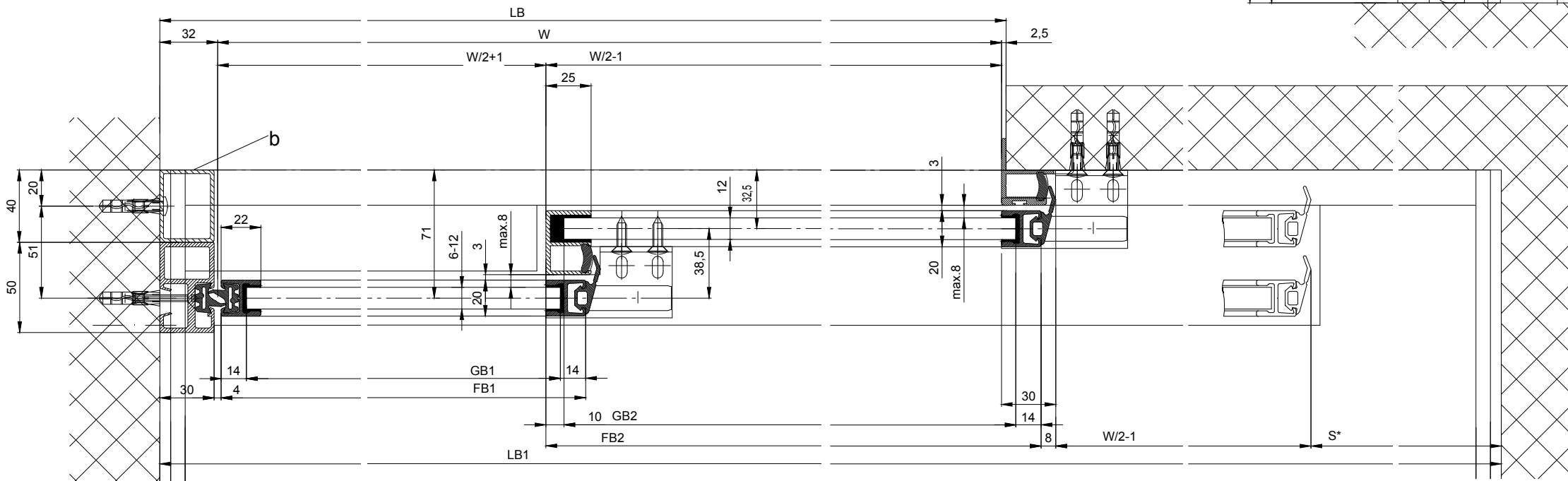
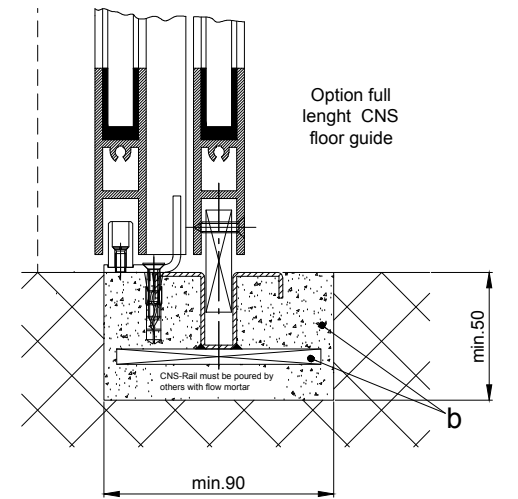
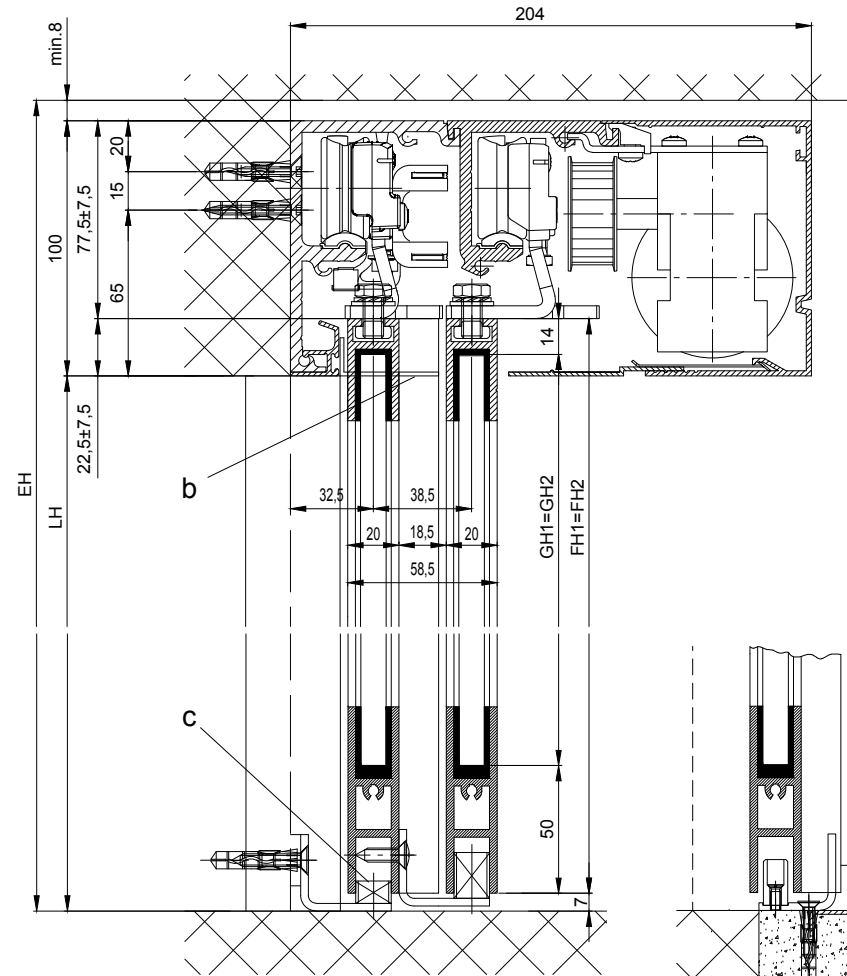
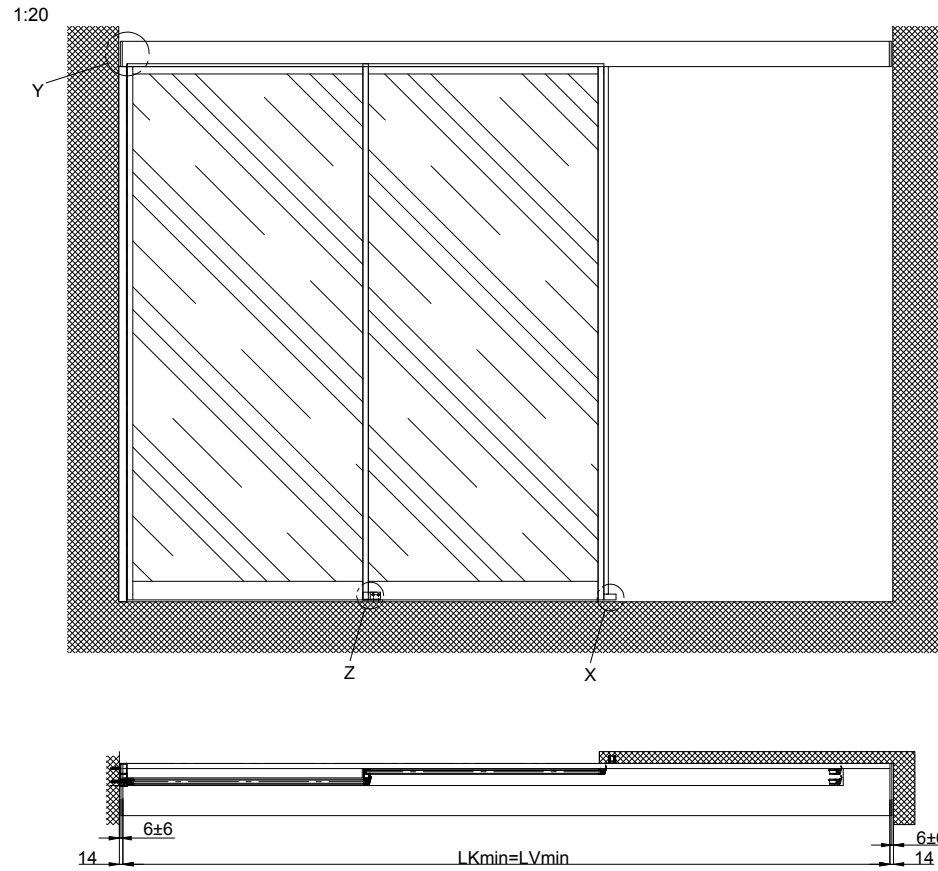
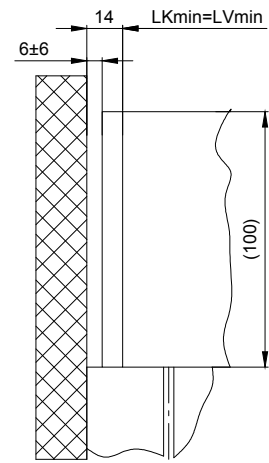


Detail Y



**Variants of the drive cross section:**  
 - Header profile 2101/2201/2202 (according to drawing)  
 - Header profile 2101/2201/2202 H100

b Executed on site  
 c bottom guidance shorten

The door leaves must be made from material which do not bear any potential risk of injury in any case of breakage (for example single sheet toughened safety glass, compound safety glass etc.). Transparent door leaves must be clearly labelled to be recognised as such.

\* Safety margin according to national regulation

Anodize/color: layer thickness: Additional info:  
 RAL :

Object:

Customer:

Order-Nr.: Date: Release signatur:

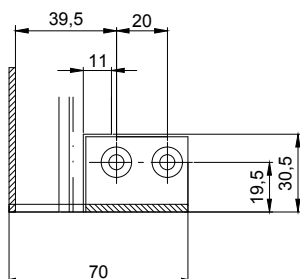
Operator: Profilsystem Execution  
 Scale: % Drawn: 07.10.19 MURO  
 ok to print

2203-TR LR12 without fixedwing, lintel

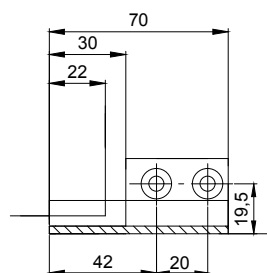
**TORMAX** AUTOMATE  
 TORMAX a Division of LANDERT Group AG  
 CH-8180 Bülach-Zürich

Document number.: T3\_390\_773  
 Index

Detail X



Detail Z



LB1=1.5W+S+61  
 W=(LB1-S-61)/1.5  
 LB1=LB+W/2+S+26.5  
 LKmin=LVmin=LB1-28  
 FB1=W/2+21  
 FB2=W/2+21  
 GB1=FB1-28  
 GB2=FB2-24

FH1=FH2=LH+15.5  
 GH1=FH1-64  
 GH2=FH2-64