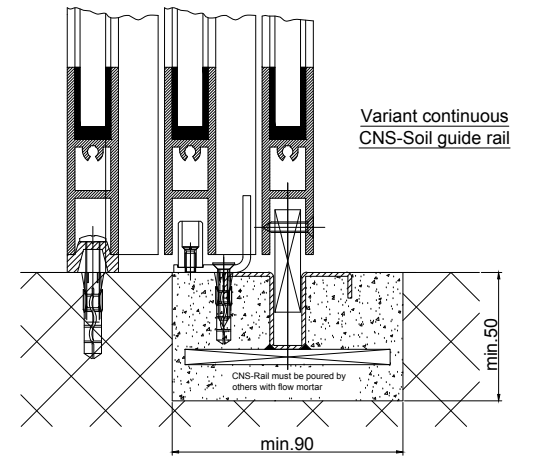
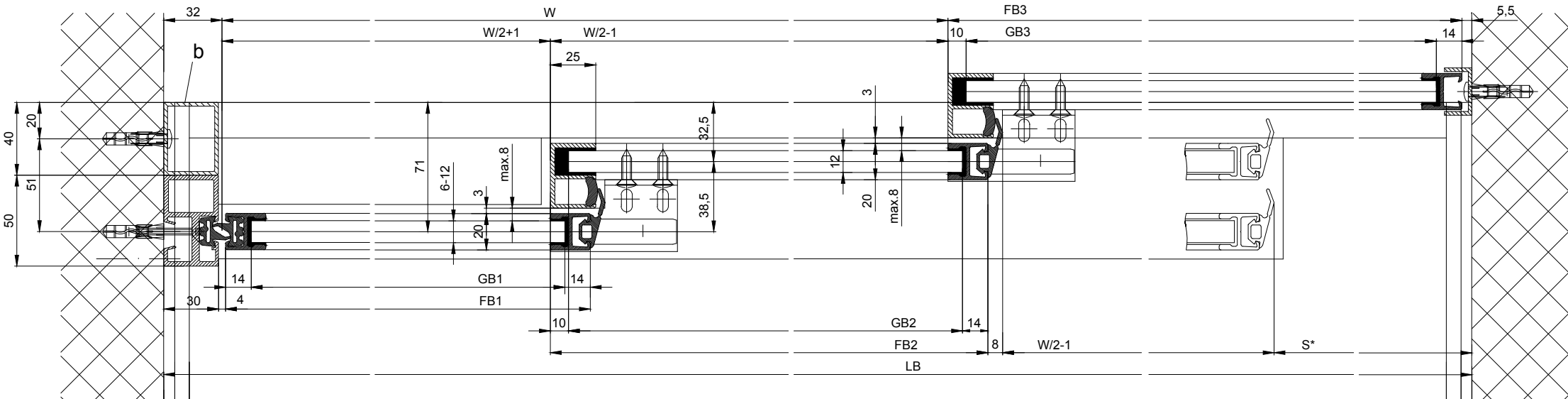
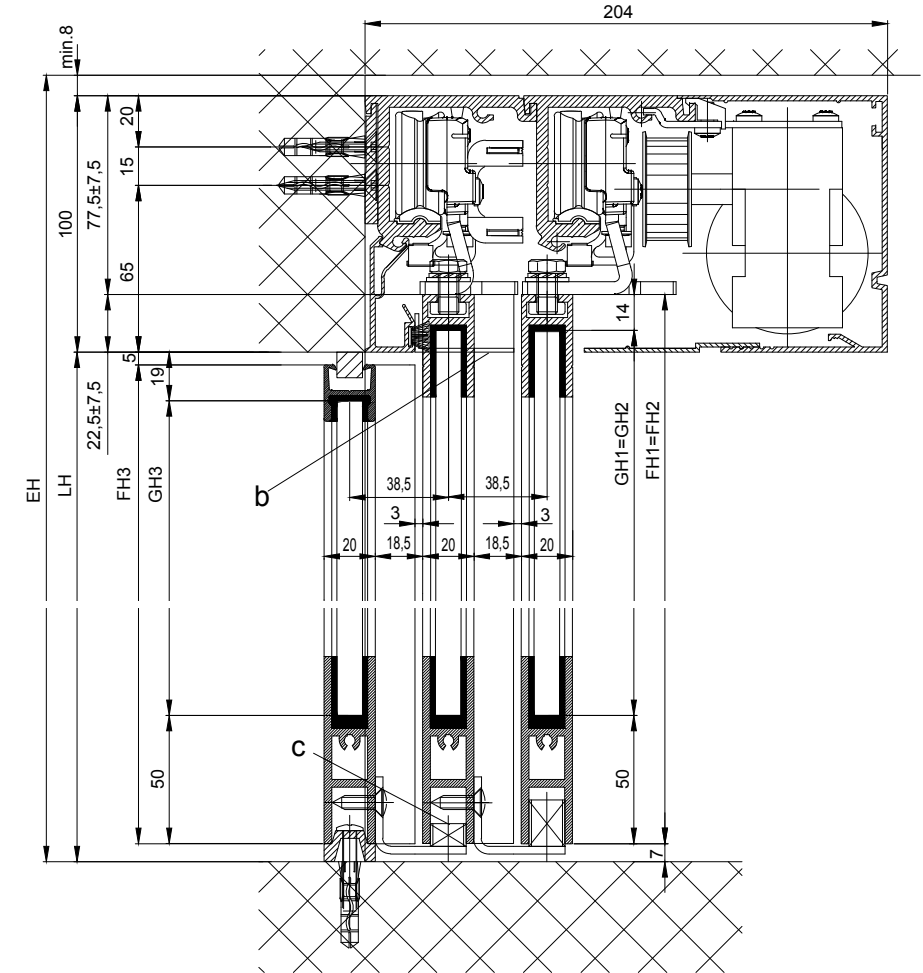
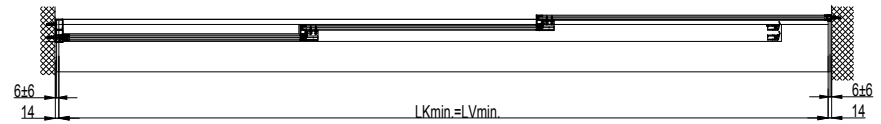
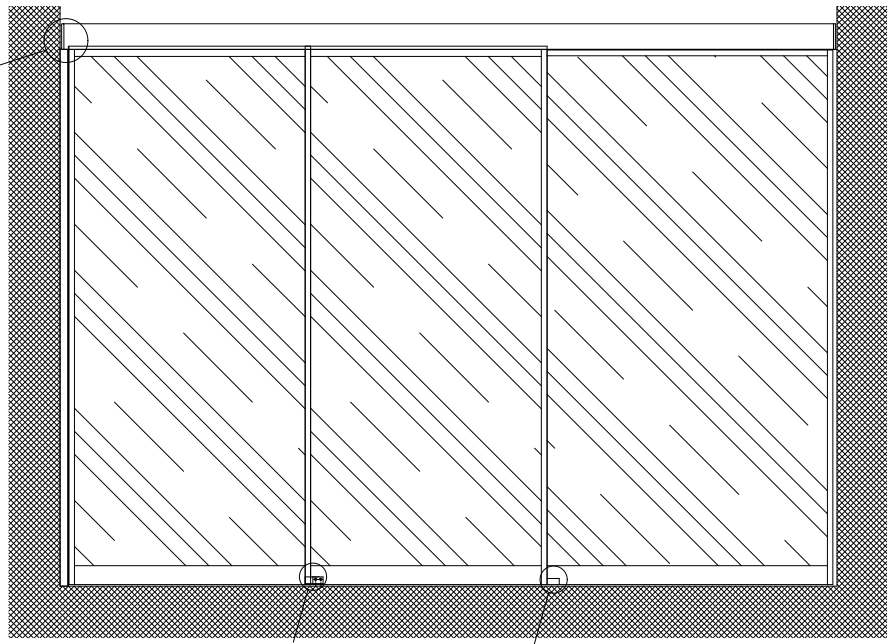
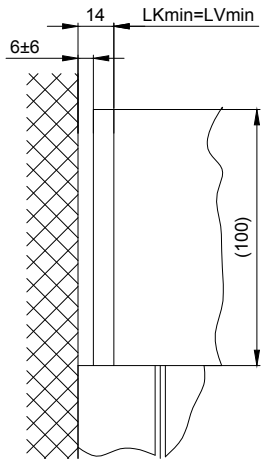


(1:20)

Detail Y



Variant continuous CNS-Soil guide rail
 b Executed on site
 c bottom guidance shorten

Variants of the drive cross section:
 - Header profile 2101/2201/2202 (according to drawing)
 - Header profile 2101/2201/2202 H100

The door leaves must be made from material which do not bear any potential risk of injury in any case of breakage (for example single sheet toughened safety glass, compound safety glass etc.). Transparent door leaves must be clearly labelled to be recognised as such.

* Safety margin according to national regulation

Anodize/color: _____ layer thickness: _____ Additional info: _____
 _____ RAL : _____

Object: _____

Customer: _____

Order-Nr.: _____ Date: _____ Releasesignatur: _____

Operator: Profilsystem Execution Scale: _____ Drawn: 07.10.19 MURD
 % ok to print

2203-TR LR12 with fixedwing, lintel

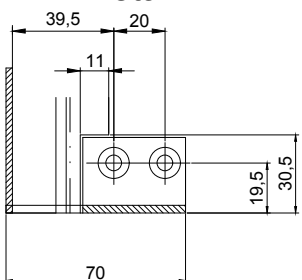
TORMAX AUTOMATIC
 TORMAX a Division of LANDERT Group AG
 CH-8180 Bülach-Zürich

Document number: **T3_390_774** Index: _____

LB=1.5W+61+S
 W=(LB-S-61)/1.5
 LKmin=LVmin=LB-28
 FB1=W/2+21
 FB2=W/2+21
 FB3=LB-W-37.5
 GB1=FB1-28
 GB2=FB2-24
 GB3=FB3-24

FH1=FH2=LH+15.5
 FH3=LH-12
 GH1=FH1-64
 GH2=FH2-64
 GH3=FH3-64

Detail Z



Detail X

