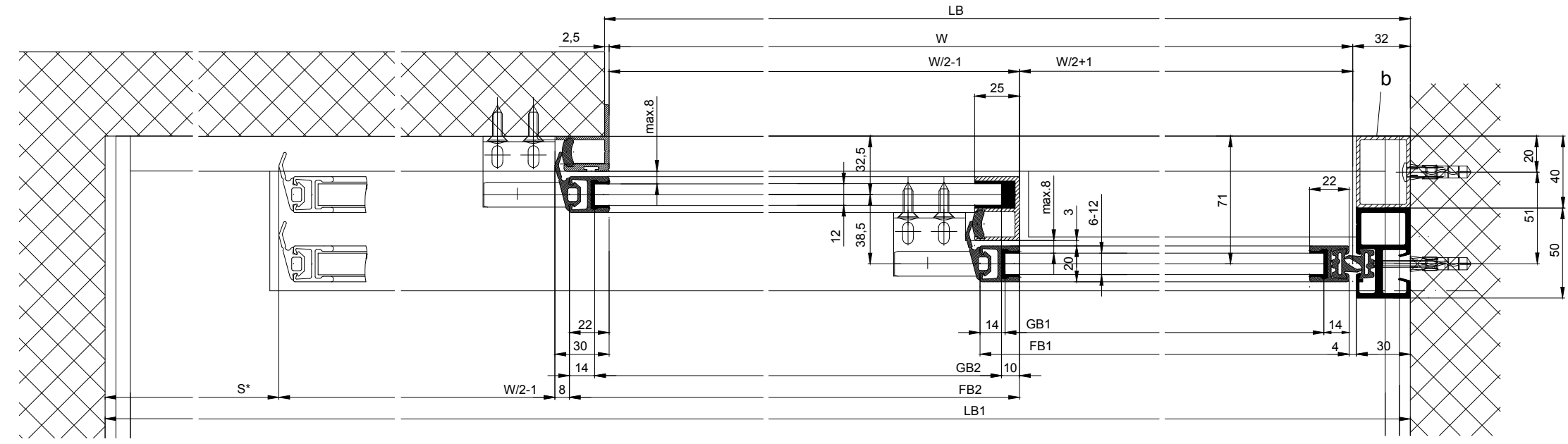
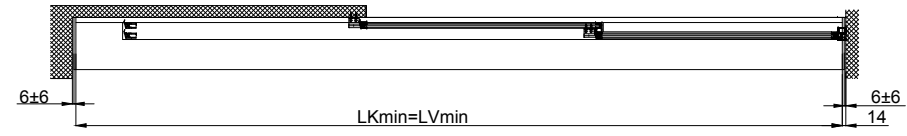
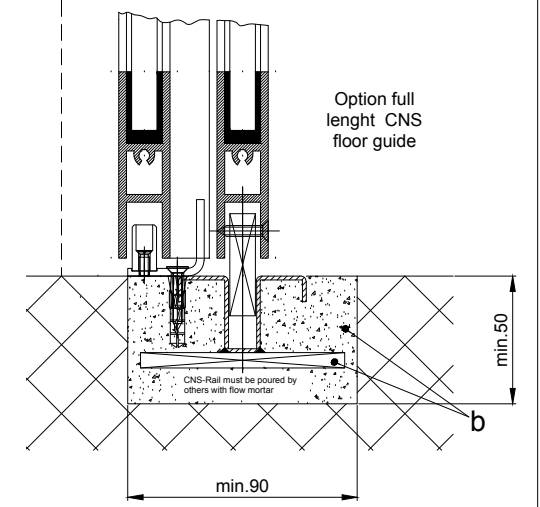
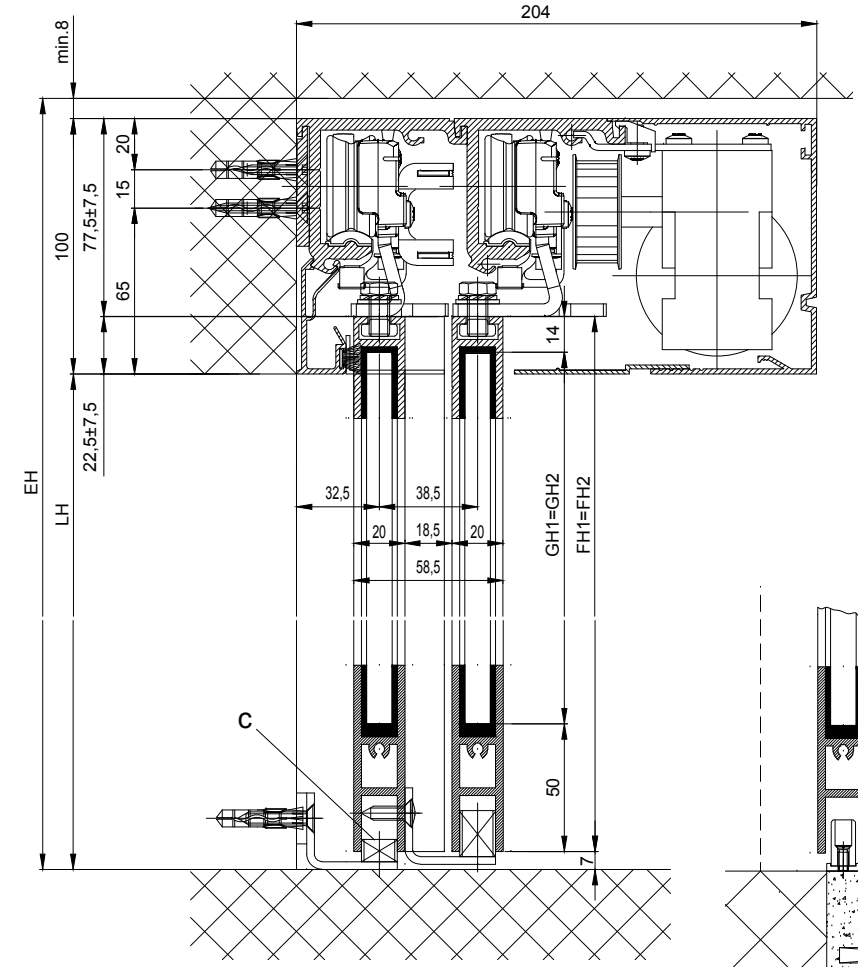
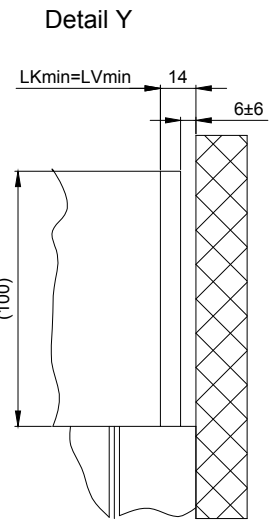
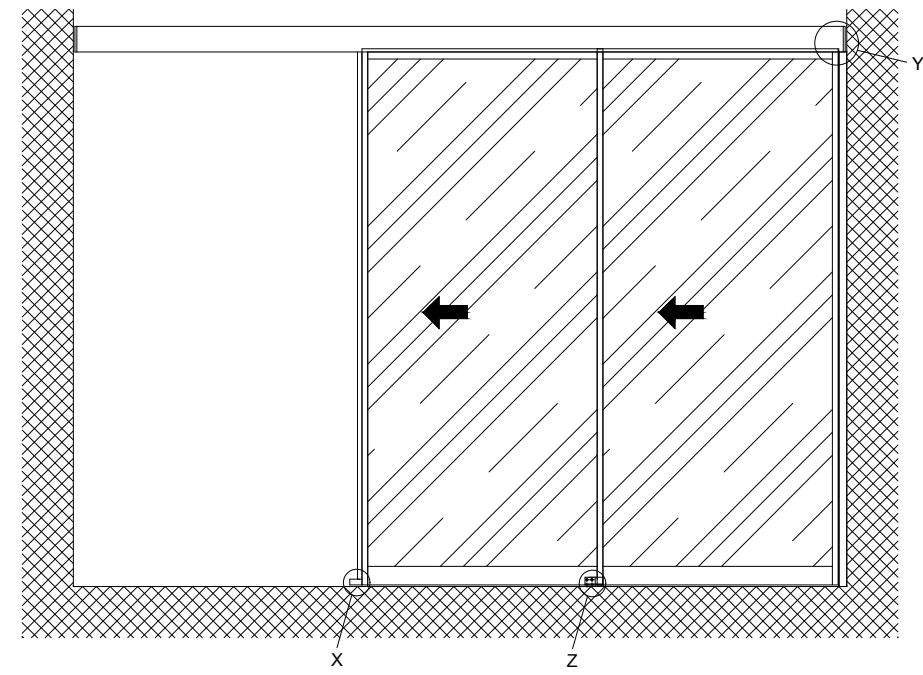


1:20

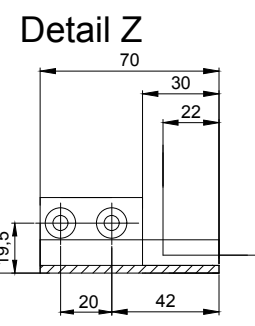
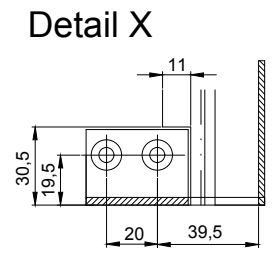


Variants of the drive cross section:
 - Header profile 2101/2201/2202 (according to drawing)
 - Header profile 2101/2201/2202 H100

b Executed on site
 c bottom guidance shorten

The door leaves must be made from material which do not bear any potential risk of injury in any case of breakage (for example single sheet toughened safety glass, compound safety glass etc.). Transparent door leaves must be clearly labelled to be recognised as such.

* Safety margin according to national regulation



| | | |
|----------------------|---------------|---|
| $LB1=1.5W+S+61$ | $FH1=LH+15.5$ | Anodize/color: _____ Additional info: _____ |
| $W=(LB1-S-61)/1.5$ | $FH2=LH+15.5$ | _____ RAL : _____ |
| $LB1=LB+W/2+S+26.5$ | | Object: _____ |
| $LKmin=LVmin=LB1-28$ | $GH1=FH1-64$ | Customer: _____ |
| $FB1=W/2+21$ | $GH2=FH2-64$ | Order-Nr.: _____ Date: _____ Release signatur: _____ |
| $FB2=W/2+21$ | | Scale: _____ Drawn: 28.11.19 MURO % ok to print |
| $GB1=FB1-28$ | | Operator typ: Profilsystem Execution |
| $GB2=FB2-24$ | | 2203-TL LR12 without fixedwing, lintel |
| | | TORMAX TORMAX a Division of LANDERT Group AG Document number: T3_390_771 Index |