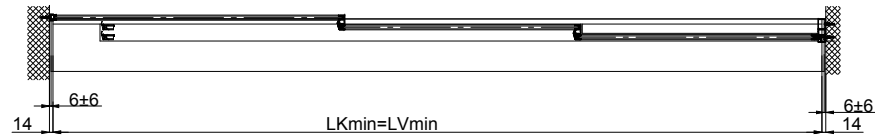
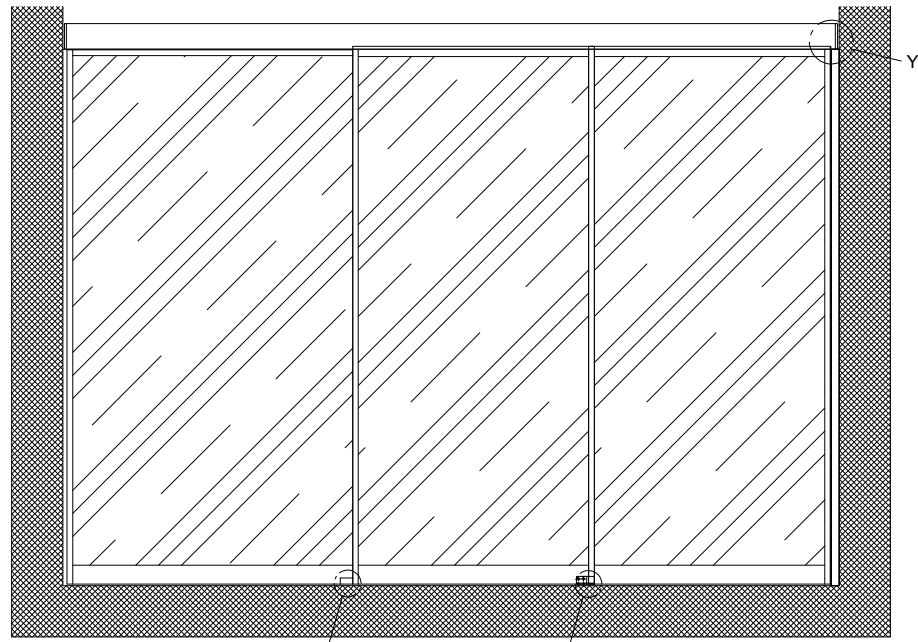
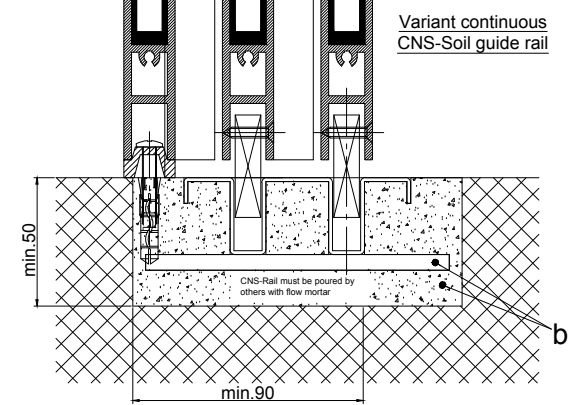
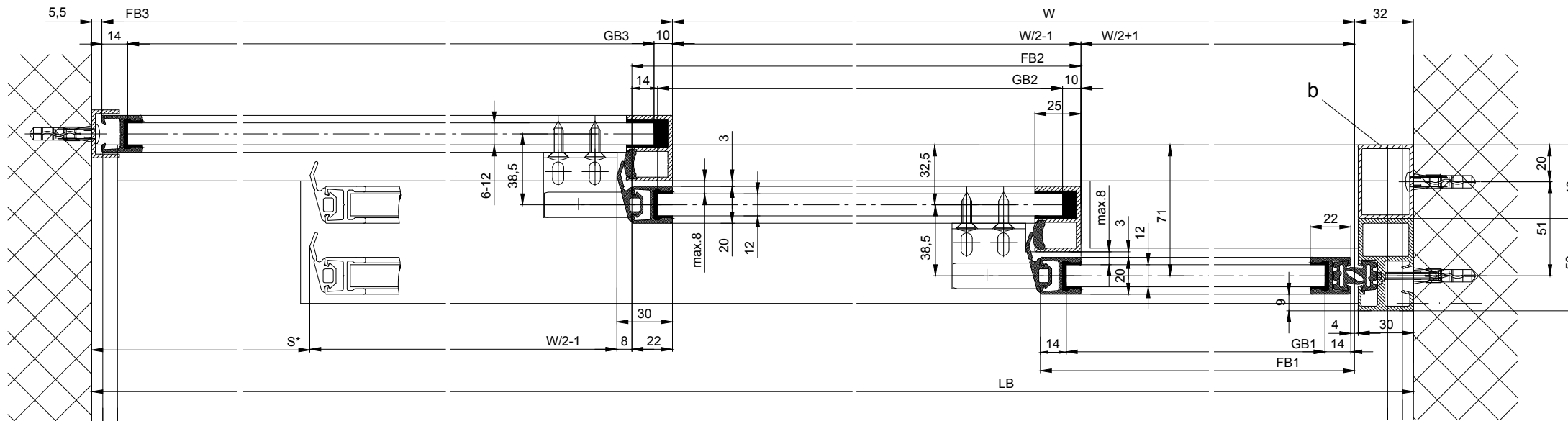
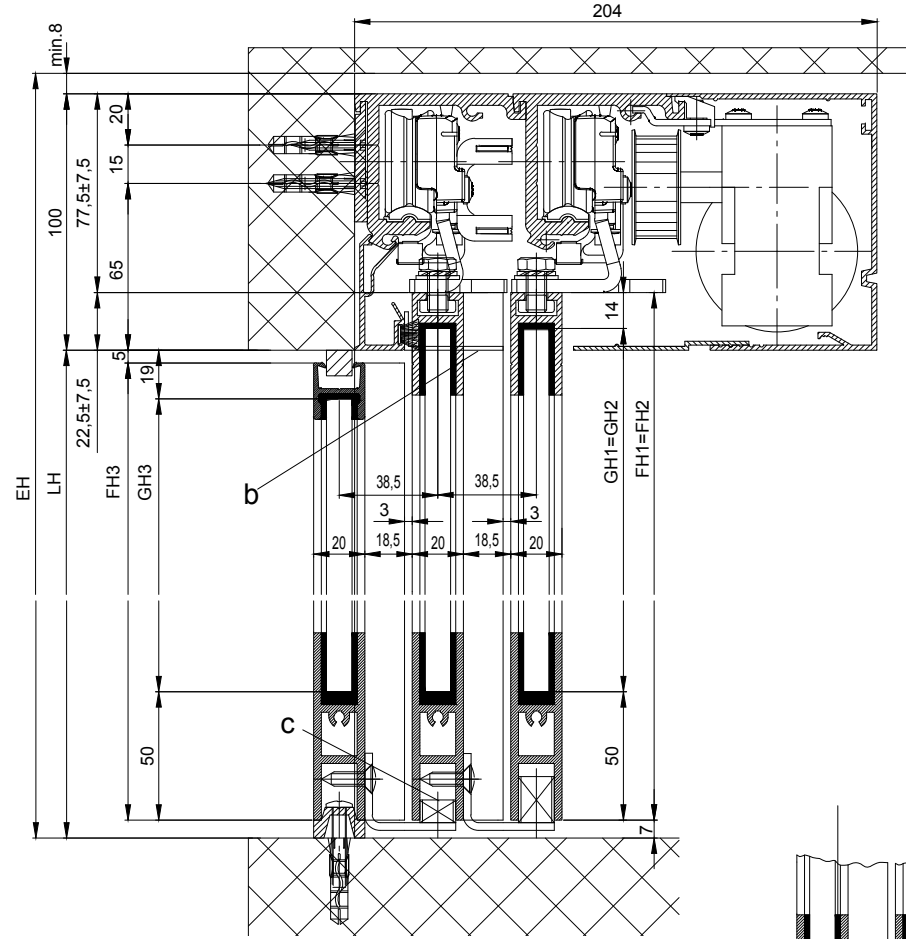
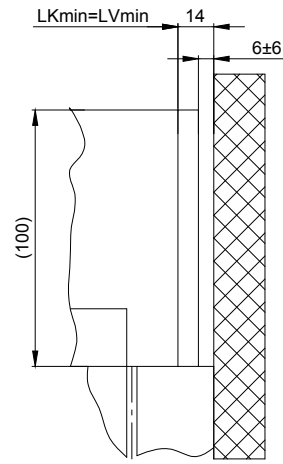


1:20



Detail Y



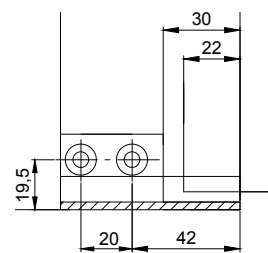
Variants of the drive cross section:
 - Header profile 2101/2201/2202 (according to drawing)
 - Header profile 2101/2201/2202 H100

b Executed on site
 c bottom guidance shorten

The door leaves must be made from material which do not bear any potential risk of injury in any case of breakage (for example single sheet toughened safety glass, compound safety glass etc.). Transparent door leaves must be clearly labelled to be recognised as such.

* Safety margin according to national regulation			
Anodize/color:	layer thickness:	Additional info:	
	RAL		
Object:			
Customer:			
Order-Nr.:	Date:	Releasesignatur:	
Operator typ: Profilsystem Execution		Scale	Drawn
2203-TL LR12 with fixedwing lintel		%	07.10.19 MUR0
TORMAX AUTOMATIC		Document number.:	Index
TORMAX a Division of LANDERT Group AG CH-8180 Bülach-Zürich		T3_390_772	.

Detail X



$LB=1.5W+61+S$	$FH1=FH2=LH+15.5$
$W=(LB-S-61)/1.5$	$FH3=LH-12$
$LKmin=LVmin=LB-28$	
$FB1=W/2+21$	
$FB2=W/2+21$	$GH1=FH1-64$
$FB3=LB-W-37.5$	$GH2=FH2-64$
$GB1=FB1-28$	$GH3=FH3-64$
$GB2=FB2-24$	
$GB3=FB3-24$	