

Variants of the drive cross section:
 - Header profile 2101/2201/2202 (according to drawing)
 - Header profile 2101/2201/2202 H100

b Executed on site c bottom guidance shorten

The door leaves must be made from material which do not bear any potential risk of injury in any case of breakage (for example single sheet toughened safety glass, compound safety glass etc.). Transparent door leaves must be clearly labelled to be recognised as such.

* Safety margin according to national regulation

Anodize/color: layer thickness: Additional info:

RAL:

Object:

Customer:

Order-Nr.: Date: Releasesignatur:

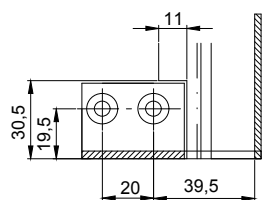
Scale: Drawn: 03.10.19 MURO
 % ok to print

Operator: Profilsystem Execution
 2201/2202-TB LR12 without fixedwing, lintel

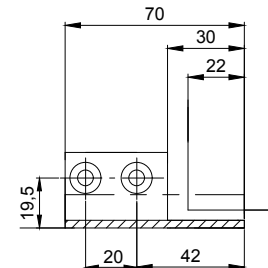
TORMAX TORMAX a Division of LANDERT Group AG
 AUTOMATIC CH-8180 Bülach-Zürich

Document number: Index
 T3_390_769

Detail X



Detail Z



LB1=1.5W+58+2S

W=(LB1-2S-58)/1.5

LKmin=LVmin=LB1-28

FB1=W/4+21

FB2=W/4+21

GB1=FB1-28

GB2=FB2-24

FH1=FH2=LH+15.5

GH1=FH1-64

GH2=FH2-64