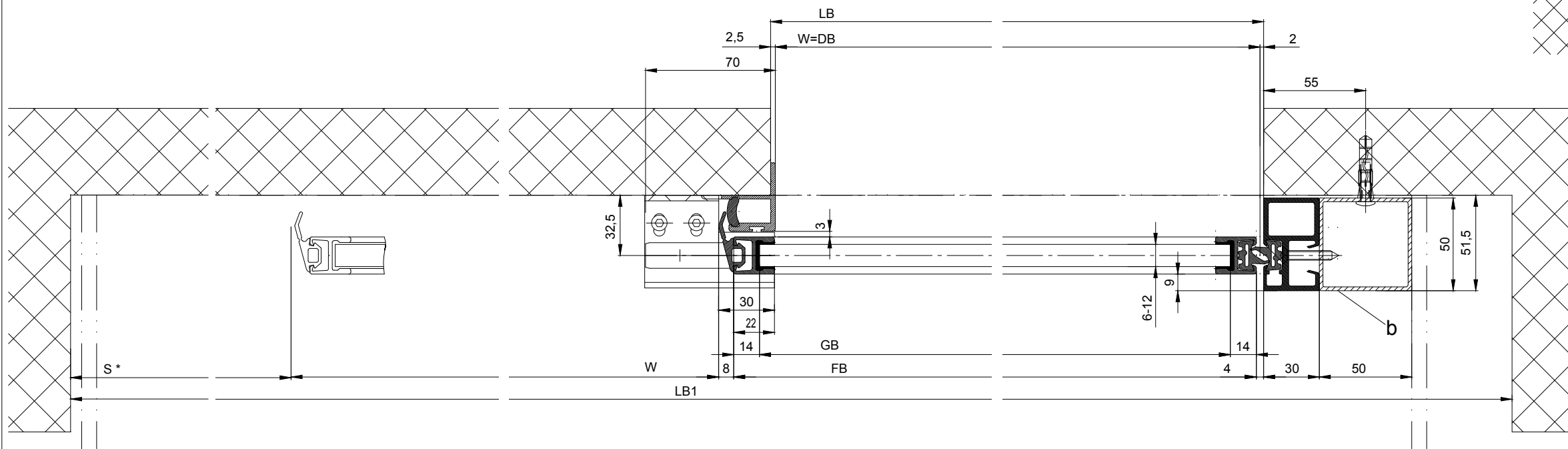
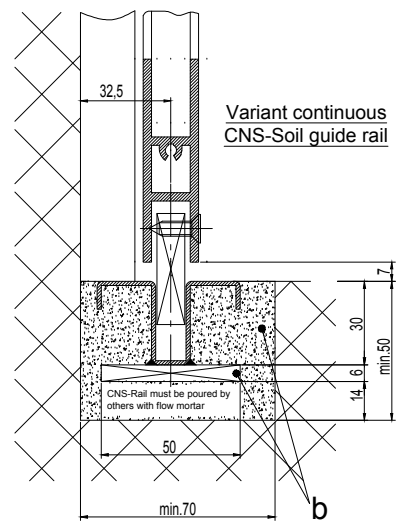
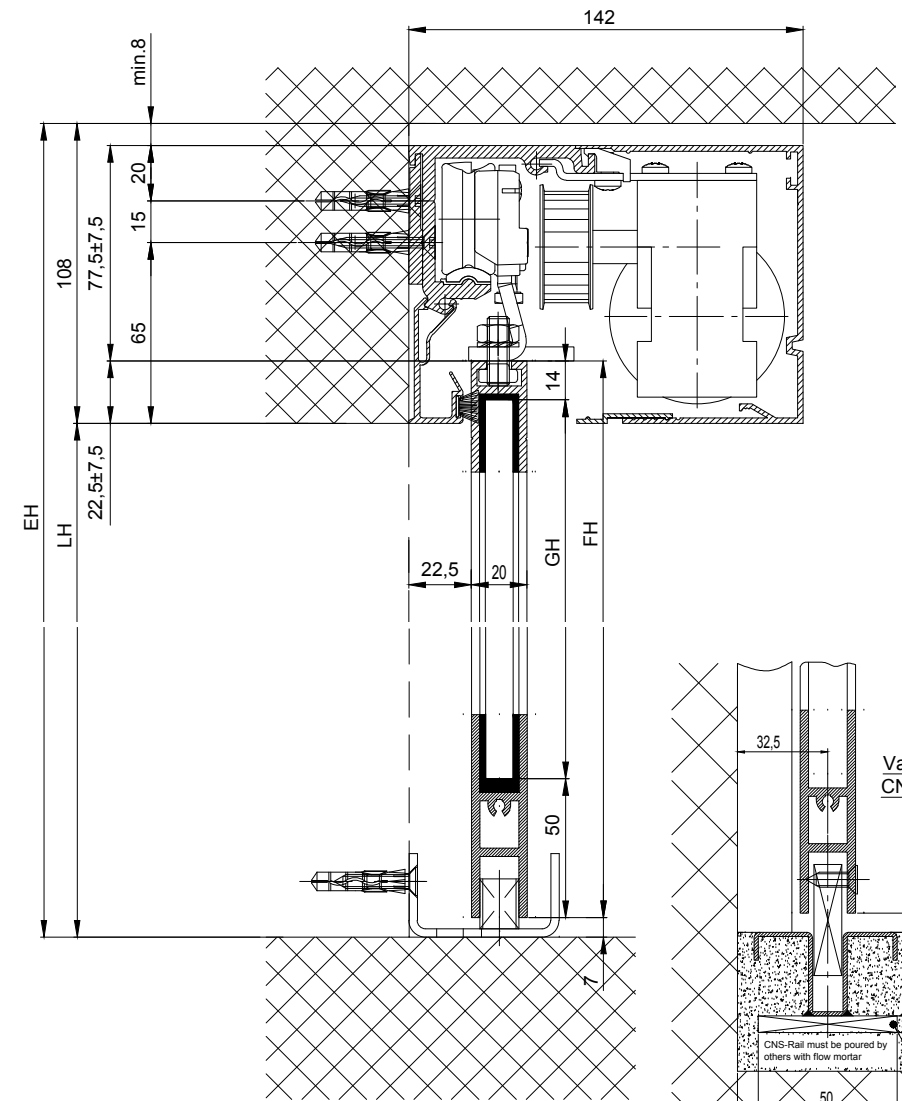
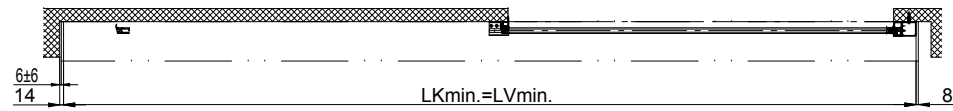
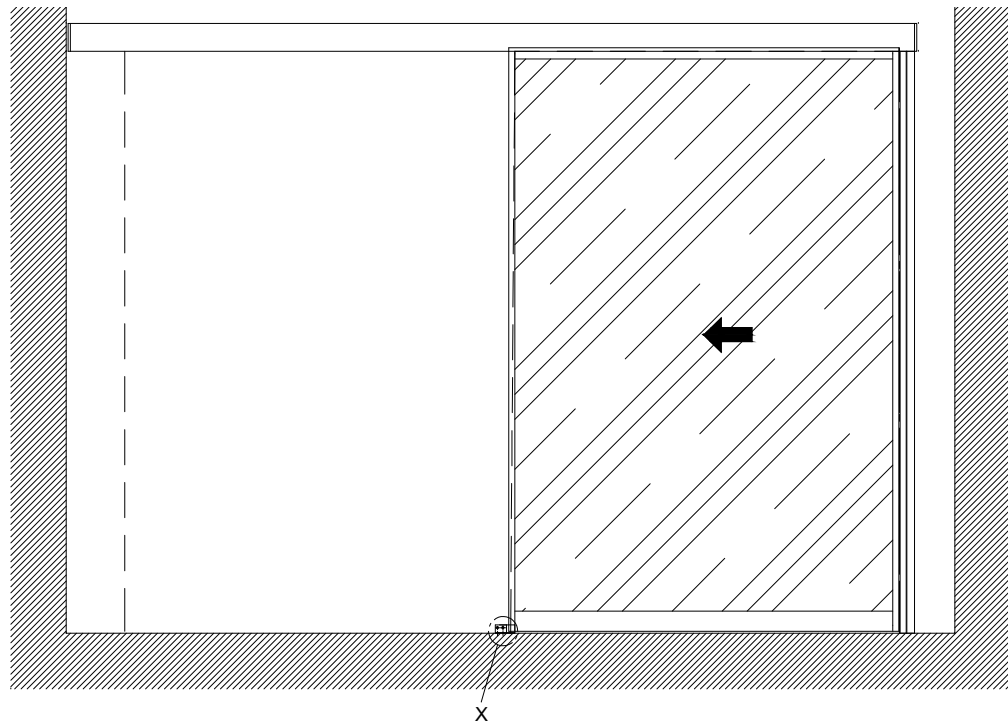


1:20



b Executed on site

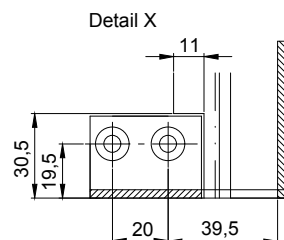
**Variants of the drive cross section:**

- Header profile 2101/2201/2202 (according to drawing)
- Header profile 2101/2201/2202 H100

The door leaves must be made from material which do not bear any potential risk of injury in any case of breakage (for example single sheet toughened safety glass, compound safety glass etc.). Transparent door leaves must be clearly labelled to be recognised as such.

\* Safety margin according to national regulation

$LB1=2*W+s+115$	
$W=(LB1-s-115)/2$	
$LKmin=LB1min-22$	
$LVmin=LKmin$	
$FB=W+20$	
$GB=FB-28$	
$FH1=LH+15.5$	
$GH1=FH1-64$	



Anodize/color:	layer thickness: _____	Additional info:
	RAL _____	
Object:		
Customer:		
Order-Nr.:	Date:	Releasesignatur:
Operator: Profisystem Execution	Scale: _____	Drawn: 26.11.19 MUR0
2203-EL LR12 without fixedwing, lintel	% ok to print	
<b>TORMAX</b> TORMAX a Division of LANDERT Group AG CH-8180 Bülach-Zürich	Document number:	Index
	T3_390_765	