

**Variants of the drive cross section:**  
 - Header profile 2101/2201/2202 (according to drawing)  
 - Header profile 2101/2201/2202 H100

b Executed on site c bottom guidance shorten

The door leaves must be made from material which do not bear any potential risk of injury in any case of breakage (for example single sheet toughened safety glass, compound safety glass etc.). Transparent door leaves must be clearly labelled to be recognised as such.

\* Safety margin according to national regulation

Anodize/color: layer thickness: Additional info:  
 RAL :

Object:

Customer:

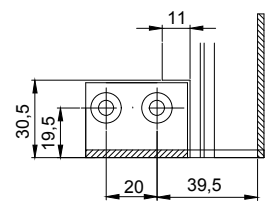
Order-Nr.: Date: Release signatur:

Scale: Drawn: 02.12.19 MURO  
 % ok to print

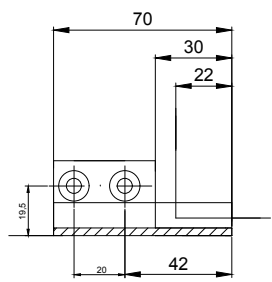
Operator typ: Profilsystem Execution  
 2203-TB LR12 with fixedwing, lintel

**TORMAX** AUTOMATIC TORMAX a Division of LANDERT Group AG  
 CH-8180 Bülach-Zürich Document number: T3\_390\_770 Index

Detail X



Detail Z



LB=1.5W+58+2S  
 W=(LB-2S-58)/1.5  
 LKmin=LVmin=LB-28  
 FB1=W/4+21  
 FB2=W/4+21  
 FB3=LB/2-W/2-5.5  
 GB1=FB1-28  
 GB2=FB2-24  
 GB3=FB3-24

FH1=FH2=LH+15.5  
 FH3=LH-12  
 GH1=FH1-64  
 GH2=FH2-64  
 GH3=FH3-64